

## anti- Connexin-43 antibody

### Product Information

Catalog No.:	FNab10703
Size:	100µg
Form:	liquid
Purification:	Immunogen affinity purified
Purity:	≥95% as determined by SDS-PAGE
Host:	Rabbit
Clonality:	polyclonal
IsoType:	IgG
Storage:	PBS with 0.02% sodium azide and 50% glycerol pH 7.3, -20°C for 12 months (Avoid repeated freeze / thaw cycles.)

### Background

Gap junction protein that acts as a regulator of bladder capacity. A gap junction consists of a cluster of closely packed pairs of transmembrane channels, the connexons, through which materials of low MW diffuse from one cell to a neighboring cell. May play a critical role in the physiology of hearing by participating in the recycling of potassium to the cochlear endolymph. Negative regulator of bladder functional capacity: acts by enhancing intercellular electrical and chemical transmission, thus sensitizing bladder muscles to cholinergic neural stimuli and causing them to contract(By similarity). May play a role in cell growth inhibition through the regulation of NOV expression and localization. Plays an essential role in gap junction communication in the ventricles(By similarity).

### Immunogen information

Immunogen:	gap junction protein, alpha 1, 43kDa
Synonyms:	Connexin-43, CX43, DFNB38, Gap junction alpha 1 protein, GJA1, GJAL, ODDD
Observed MW:	47 kDa
Uniprot ID :	P17302

### Application

1

### Wuhan Fine Biotech Co., Ltd.

B9 Bld, High-Tech Medical Devices Park, No. 818 Gaoxin Ave. East Lake High-Tech Development Zone. Wuhan, Hubei, China(430206)

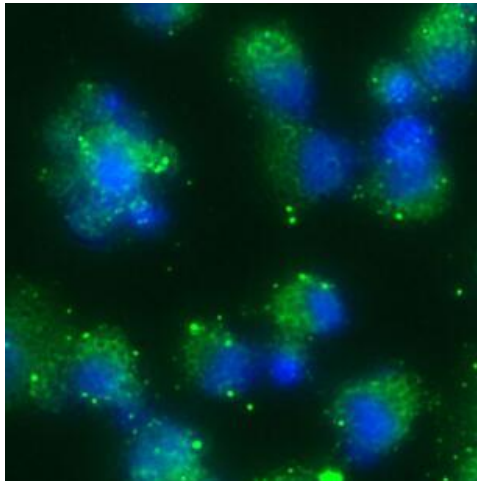
Tel : (0086)027-87384275

Fax: (0086)027-87800889

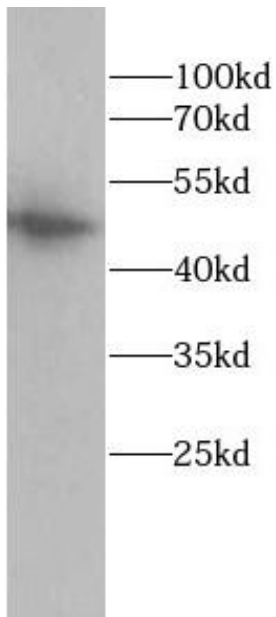
[www.fn-test.com](http://www.fn-test.com)

Reactivity: Human, Mouse, Rat  
Tested Application: ELISA, WB, IF  
Recommended dilution: WB: 1:500-1:2000; IF: 1:50-1:500

Image:



Immunofluorescent analysis of HeLa cells using FNab10703(Connexin-43 antibody) at dilution of 1:50.



Rat brain tissue were subjected to SDS PAGE followed by western blot with FNab10703(Connexin-43 antibody) at dilution of 1:1000