

anti- Caspase 8 antibody

Product Information

Catalog No.:	FNab10024
Size:	100µg
Form:	liquid
Purification:	Immunogen affinity purified
Purity:	≥95% as determined by SDS-PAGE
Host:	Rabbit
Clonality:	polyclonal
Clone ID:	None
IsoType:	IgG
Storage:	PBS with 0.02% sodium azide and 50% glycerol pH 7.3, -20°C for 12 months (Avoid repeated freeze / thaw cycles.)

Background

Caspase 8, also named as MCH5, MACH, FLICE, and CAP4, belongs to the peptidase C14A family. It may participate in the GZMB apoptotic pathways and functions as an upstream regulator in a-bisabolol-induced apoptosis. Caspase 8 catalyzes an essential intermediate step in the ubiquitination and proteasome-mediated degradation of IRF3(PMID:21816816). It may control diabetic embryopathy-associated apoptosis via Caspase 8 is expressed as nine isoforms by alternative splicing with the molecular mass from 26 kDa to 62 kDa. This antibody can recognize pro-and cleaved-caspase 8.

Immunogen information

Immunogen:	caspase 8, apoptosis-related cysteine peptidase
Synonyms:	Apoptotic cysteine protease, Apoptotic protease Mch 5, Casp 8, CASP8, Caspase 8, Caspase 8/p18, Caspase8, FADD like ICE, FLICE, ICE like apoptotic protease 5, MACH, MCH5
Observed MW:	53-57 kDa, 32-45 kDa
Uniprot ID :	Q14790

Application

1

Wuhan Fine Biotech Co., Ltd.

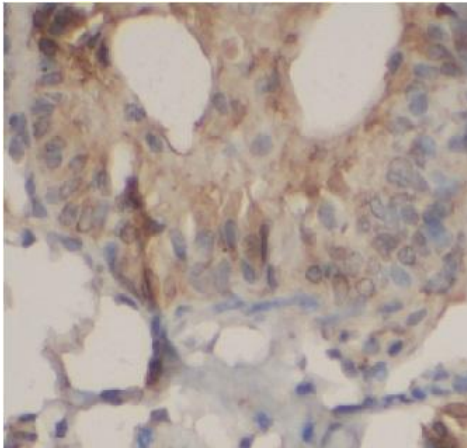
B9 Bld, High-Tech Medical Devices Park, No. 818 Gaoxin Ave. East Lake High-Tech Development Zone. Wuhan, Hubei, China(430206)

Tel : (0086)027-87384275

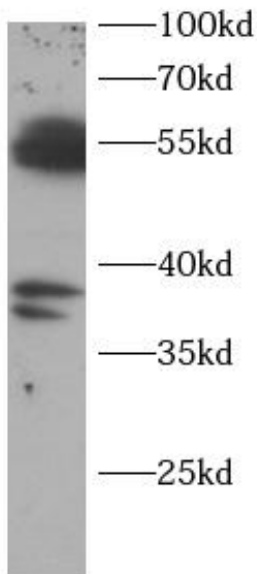
Fax: (0086)027-87800889

www.fn-test.com

Reactivity: Human, Mouse
Tested Application: ELISA, WB, IHC
Recommended dilution: WB: 1:500-1:2000; IHC: 1:50-1:500
Image:



Immunohistochemistry of paraffin-embedded mouse lung using FNab10024(CASP8 antibody) at dilution of 1:100



Jurkat cells were subjected to SDS PAGE followed by western blot with FNab10024(CASP8 antibody) at dilution of 1:1000