

anti- Caspase 1 antibody

Product Information

Catalog No.:	FNab10015
Size:	100µg
Form:	liquid
Purification:	Immunogen affinity purified
Purity:	≥95% as determined by SDS-PAGE
Host:	Rabbit
Clonality:	polyclonal
Clone ID:	None
IsoType:	IgG
Storage:	PBS with 0.02% sodium azide and 50% glycerol pH 7.3, -20°C for 12 months (Avoid repeated freeze / thaw cycles.)

Background

CASP1(caspase-1) is also named as IL1BC, IL1BCE and belongs to the peptidase C14A family. It is a cysteine protease that regulates inflammatory processes through its capacity to process and activate the interleukin-1-beta(IL1B), IL18, and IL33 precursor proteins. The active caspase-1 can increase cellular membrane permeability and intracellular calcium levels, which facilitates lysosome exocytosis and release of host antimicrobial factors and microbial products(PMID:21804020). It has 5 isoforms produced by alternative splicing.

Immunogen information

Immunogen:	caspase 1
Synonyms:	CASP 1, CASP1, Caspase 1, Caspase 1/p20/p10, Caspase1, ICE, IL 1 beta converting enzyme, IL 1BC, IL1BC, IL1BCE, Interleukin 1 beta convertase, p10, p20, P45
Observed MW:	45-47 kDa, 30 kDa, 35 kDa
Uniprot ID :	P29466

Application

Wuhan Fine Biotech Co., Ltd.

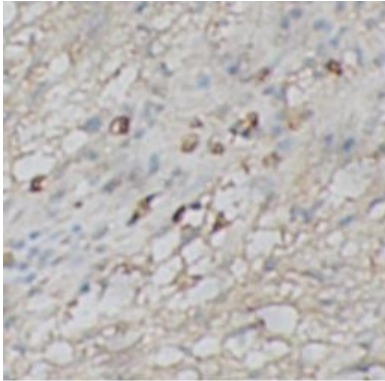
B9 Bld, High-Tech Medical Devices Park, No. 818 Gaoxin Ave. East Lake High-Tech Development Zone. Wuhan, Hubei, China(430206)

Tel : (0086)027-87384275

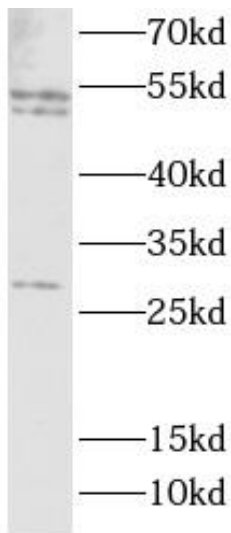
Fax: (0086)027-87800889

www.fn-test.com

Reactivity: Human, Mouse
Tested Application: ELISA, WB, IHC
Recommended dilution: WB: 1:200-1:2000; IHC: 1:50-1:500
Image:



Immunohistochemistry of paraffin-embedded human stomach tissue slide using FNab10015(CASP1 Antibody) at dilution of 1:100



NIH/3T3 cells were subjected to SDS PAGE followed by western blot with FNab10015(CASP1 antibody) at dilution of 1:1000

Wuhan Fine Biotech Co., Ltd.

B9 Bld, High-Tech Medical Devices Park, No. 818 Gaoxin Ave. East Lake High-Tech Development Zone. Wuhan, Hubei, China(430206)

Tel : (0086)027-87384275

Fax: (0086)027-87800889

www.fn-test.com