

## anti- Phospho-AKT1S1(T246) antibody

### Product Information

Catalog No.:	FNab09943
Size:	100µg
Form:	liquid
Purification:	Immunogen affinity purified
Purity:	≥95% as determined by SDS-PAGE
Host:	Rabbit
Clonality:	polyclonal
Clone ID:	None
IsoType:	IgG
Storage:	PBS with 0.02% sodium azide and 50% glycerol pH 7.3, -20°C for 12 months (Avoid repeated freeze / thaw cycles.)

### Immunogen information

Immunogen:	A synthetic phosphorylated peptide around Thr246 of human AKT1S1
Synonyms:	AKT1S1, Lobe, PRAS40, AKT1 substrate 1
Observed MW:	50 kDa
Uniprot ID :	Q96B36

### Application

Reactivity:	Human, Mouse, Rat
Tested Application:	ELISA, WB, IHC
Recommended dilution:	WB: 1:500 - 1:2000; IHC: 1:20 - 1:200
Image:	

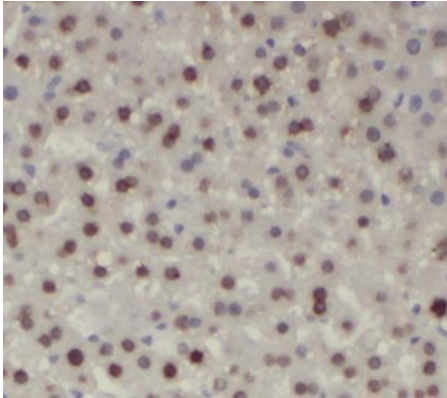
### Wuhan Fine Biotech Co., Ltd.

B9 Bld, High-Tech Medical Devices Park, No. 818 Gaoxin Ave. East Lake High-Tech Development Zone. Wuhan, Hubei, China(430206)

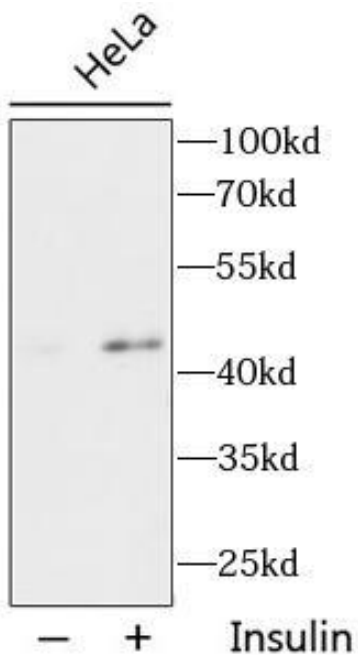
Tel : (0086)027-87384275

Fax: (0086)027-87800889

[www.fn-test.com](http://www.fn-test.com)



Immunohistochemistry of paraffin-embedded rat liver tissue slide using FNab09943(Phospho-AKT1S1(T246) Antibody) at dilution of 1:100



HeLa cells were subjected to SDS PAGE followed by western blot with FNab09943(Phospho-AKT1S1(T246) Antibody) at dilution of 1:1000, HeLa cells were treated by Insulin (0.01U/ml) for 15 minutes after serum-starvation overnight.