

anti- Collagen Type I antibody

Product Information

Catalog No.:	FNab09910
Size:	100µg
Form:	liquid
Purification:	protein A+G purified
Purity:	≥95% as determined by SDS-PAGE
Host:	Mouse
Clonality:	monoclonal
Clone ID:	3D7
IsoType:	IgG1
Storage:	PBS with 0.02% sodium azide and 50% glycerol pH 7.3, -20°C for 12 months (Avoid repeated freeze / thaw cycles.)

Background

This gene encodes the pro-alpha2 chain of type I collagen whose triple helix comprises two alpha1 chains and one alpha2 chain. Type I is a fibril-forming collagen found in most connective tissues and is abundant in bone, cornea, dermis and tendon. Mutations in this gene are associated with osteogenesis imperfecta types I-IV, Ehlers-Danlos syndrome type VIIB, recessive Ehlers-Danlos syndrome Classical type, idiopathic osteoporosis, and atypical Marfan syndrome. Symptoms associated with mutations in this gene, however, tend to be less severe than mutations in the gene for the alpha1 chain of type I collagen (COL1A1) reflecting the different role of alpha2 chains in matrix integrity. Three transcripts, resulting from the use of alternate polyadenylation signals, have been identified for this gene.

Immunogen information

Immunogen:	collagen, type I, alpha 2
Synonyms:	Alpha 2 type I collagen, COL1A2, Collagen alpha 2(I) chain, Collagen Type I, collagen, type I, alpha 2, OI4
Observed MW:	None
Uniprot ID :	P08123

Wuhan Fine Biotech Co., Ltd.

B9 Bld, High-Tech Medical Devices Park, No. 818 Gaoxin Ave. East Lake High-Tech Development Zone. Wuhan, Hubei, China(430206)

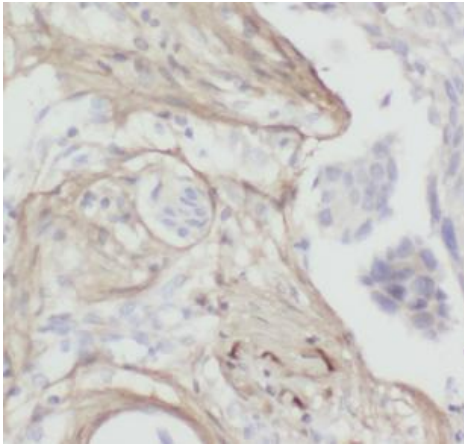
Application

Reactivity: Human

Tested Application: ELISA, IHC

Recommended dilution:IHC: 1:2000 - 1:8000

Image:



Immunohistochemistry of paraffin-embedded human breast cancer tissue slide using FNab09910(COL1A2 Antibody) at dilution of 1:5000

Wuhan Fine Biotech Co., Ltd.

B9 Bld, High-Tech Medical Devices Park, No. 818 Gaoxin Ave. East Lake High-Tech Development Zone. Wuhan, Hubei, China(430206)

Tel : (0086)027-87384275

Fax: (0086)027-87800889

www.fn-test.com