

## anti- DVL1 antibody

### Product Information

Catalog No.:	FNab09841
Size:	100µg
Form:	liquid
Purification:	Immunogen affinity purified
Purity:	≥95% as determined by SDS-PAGE
Host:	Rabbit
Clonality:	polyclonal
Clone ID:	None
IsoType:	IgG
Storage:	PBS with 0.02% sodium azide and 50% glycerol pH 7.3, -20°C for 12 months (Avoid repeated freeze / thaw cycles.)

### Background

DVL1 is one of three DVL homologous proteins (DVL1–3) widely expressed in embryonic development and in the adult central nervous system. Dishevelled proteins are a necessary component of the Wnt and planar cell polarity developmental signaling pathways. Overexpression of DVL1 has been linked to prostate and breast cancers through the Wnt signaling pathway.

### Immunogen information

Immunogen:	dishevelled, dsh homolog 1
Synonyms:	Dishevelled 1, DSH homolog 1, DVL, DVL1
Observed MW:	70kDa
Uniprot ID :	O14640

### Application

Reactivity:	Human, Mouse
Tested Application:	ELISA, WB, IHC
Recommended dilution:	WB: 1:500-1:2000; IHC: 1:50-1:500

### Wuhan Fine Biotech Co., Ltd.

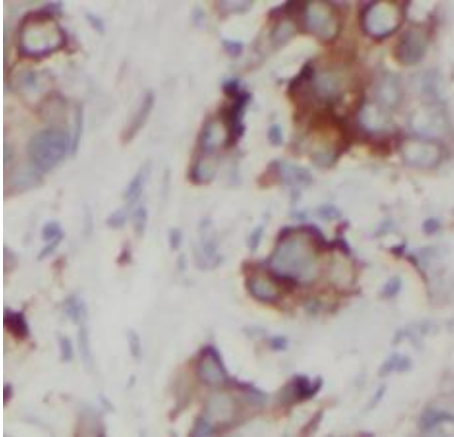
B9 Bld, High-Tech Medical Devices Park, No. 818 Gaoxin Ave. East Lake High-Tech Development Zone. Wuhan, Hubei, China(430206)

Tel : (0086)027-87384275

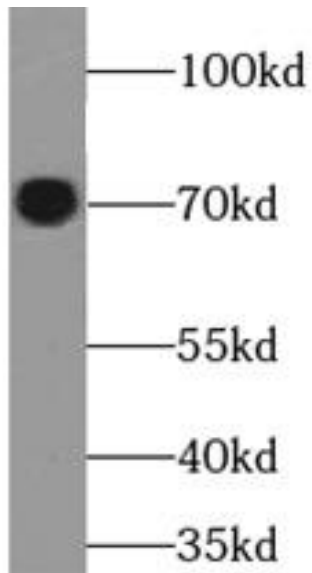
Fax: (0086)027-87800889

[www.fn-test.com](http://www.fn-test.com)

Image:



Immunohistochemistry of paraffin-embedded human breast cancer tissue slide using FNab09841( DVL1 antibody) at dilution of 1:200



NIH/3T3 cells were subjected to SDS PAGE followed by western blot with FNab09841 (DVL1 antibody) at dilution of 1:1000