

## anti- NPPB antibody

### Product Information

Catalog No.:	FNab09840
Size:	100µg
Form:	liquid
Purification:	Immunogen affinity purified
Purity:	≥95% as determined by SDS-PAGE
Host:	Rabbit
Clonality:	polyclonal
Clone ID:	None
IsoType:	IgG
Storage:	PBS with 0.02% sodium azide and 50% glycerol pH 7.3, -20°C for 12 months (Avoid repeated freeze / thaw cycles.)

### Background

NPPB, also known as B-type natriuretic peptide (BNP), is a cardiac hormone that is secreted mainly in the ventricles in response to increased wall stress. The protein undergoes two cleavage events, one within the cell and a second after secretion into the blood. The protein's biological actions include natriuresis, diuresis, vasorelaxation, inhibition of renin and aldosterone secretion, and a key role in cardiovascular homeostasis. BNP is a marker of systolic and diastolic dysfunction and a strong predictor of mortality in heart failure patients.

### Immunogen information

Immunogen:	natriuretic peptide precursor B
Synonyms:	BNP, BNP(1 32), Natriuretic peptides B, NPPB
Observed MW:	15kDa
Uniprot ID :	P16860

### Application

Reactivity:	Human
Tested Application:	ELISA, IHC

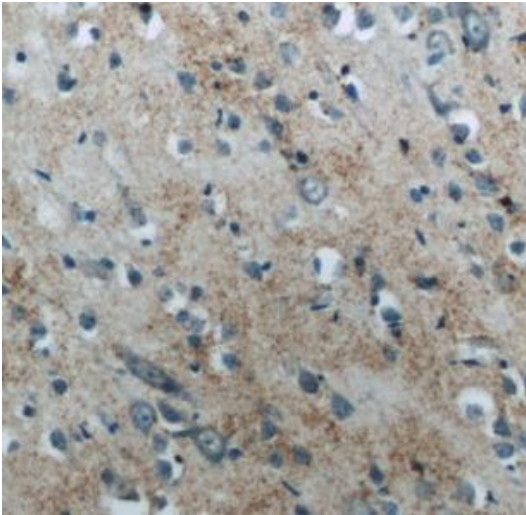
### Wuhan Fine Biotech Co., Ltd.

B9 Bld, High-Tech Medical Devices Park, No. 818 Gaoxin Ave. East Lake High-Tech Development Zone. Wuhan, Hubei, China(430206)

---

Recommended dilution:IHC: 1:20-1:200

Image:



Immunohistochemistry of paraffin-embedded human brain slide using FNab09840( BNP Antibody) at dilution of 1:50