

## anti- EPCAM antibody

### Product Information

Catalog No.:	FNab09783
Size:	100µg
Form:	liquid
Purification:	Protein A+G purification
Purity:	≥95% as determined by SDS-PAGE
Host:	Mouse
Clonality:	monoclonal
Clone ID:	3C8
IsoType:	IgG1
Storage:	PBS with 0.02% sodium azide and 50% glycerol pH 7.3, -20°C for 12 months (Avoid repeated freeze / thaw cycles.)

### Background

Epithelial cell adhesion molecule(EpCAM, CD326) is a type I transmembrane glycoprotein that functions as a homophilic, epithelial-specific intercellular cell-adhesion molecule. In addition to cell adhesion, EpCAM is also involved in cellular signaling, cell migration, proliferation, and differentiation. EpCAM is highly expressed on most carcinomas and therefore of potential use as a diagnostic and prognostic marker for a variety of carcinomas, and has become a therapeutic target.(PMID: 20837599; 19249674; 21576002; 22647938)

### Immunogen information

Immunogen:	epithelial cell adhesion molecule
Synonyms:	GA733-2, M1S2, M4S1, MIC18, TACSTD1, TROP1
Observed MW:	36 kDa
Uniprot ID :	P16422

### Application

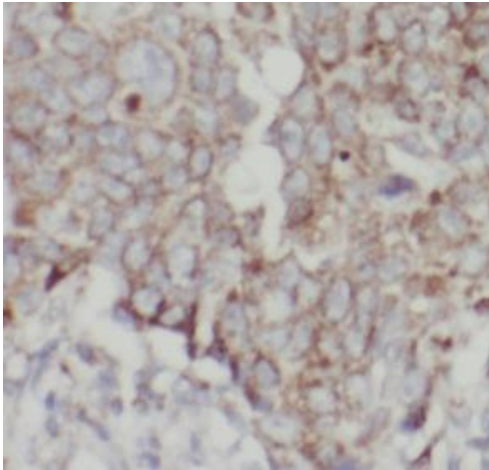
Reactivity:	Human
Tested Application:	ELISA, WB, IHC

### Wuhan Fine Biotech Co., Ltd.

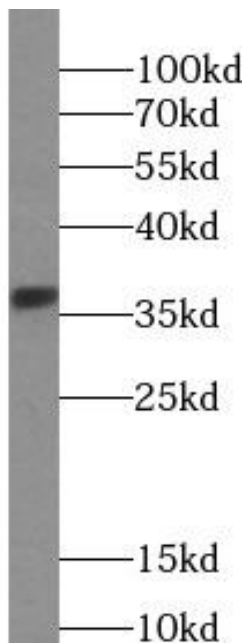
B9 Bld, High-Tech Medical Devices Park, No. 818 Gaoxin Ave. East Lake High-Tech Development Zone. Wuhan, Hubei, China(430206)

Recommended dilution: WB: 1:1000-1:10000; IHC: 1:50-1:500

Image:



Immunohistochemistry of paraffin-embedded human breast cancer tissue slide using FNab09783(EPCAM Antibody) at dilution of 1:500



A431 cells were subjected to SDS PAGE followed by western blot with FNab09783(EPCAM Antibody) at dilution of 1:2000

**Wuhan Fine Biotech Co., Ltd.**

B9 Bld, High-Tech Medical Devices Park, No. 818 Gaoxin Ave. East Lake High-Tech Development Zone. Wuhan, Hubei, China(430206)

Tel : (0086)027-87384275

Fax: (0086)027-87800889

[www.fn-test.com](http://www.fn-test.com)