

## ZO-1 antibody

### Product Information

Catalog No.:	FNab09750
Size:	100µg
Form:	liquid
Purification:	Immunogen affinity purified
Purity:	≥95% as determined by SDS-PAGE
Host:	Rabbit
Clonality:	polyclonal
IsoType:	IgG
Storage:	PBS with 0.02% sodium azide and 50% glycerol pH 7.3, -20°C for 12 months (Avoid repeated freeze / thaw cycles.)

### Background

Tight junction(or zonula occludens) form the continuous intercellular barrier between epithelial and endothelial cells, which is required to separate tissue spaces and regulate selective movement of solutes across the epithelium and endothelium(PMID: 20066090). ZO-1(also known as TJP1) is a peripheral membrane phosphoprotein located on the cytoplasmic face and is expressed in tight junctions of both epithelial and endothelial cells(PMID: 3528172). It binds the transmembrane proteins occludin and the claudins linking them to cytoskeletal actin(PMID: 17418867). ZO-1 belongs to a family of multidomain proteins known as the membrane-associated guanylate kinase homologs(MAGUKs). It is a pivotal tight junction protein and may be involved in signalling mechanisms regulating cell proliferation and differentiation(PMID: 22782886).

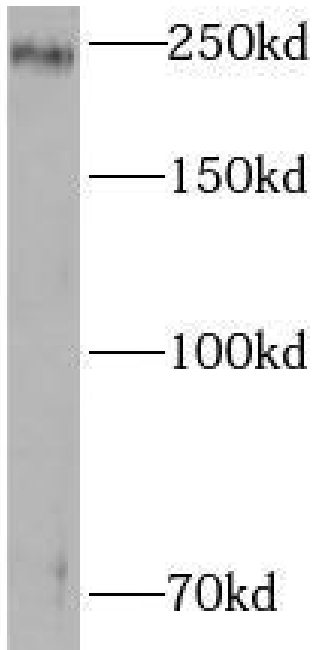
### Immunogen information

Immunogen:	tight junction protein 1(zona occludens 1)
Synonyms:	Tight junction protein 1, Tight junction protein ZO 1, TJP1, ZO 1, ZO1, ZO-1, Zona occludens protein 1, Zonula occludens protein 1
Observed MW:	230kd
Uniprot ID :	Q07157

### Application

Reactivity:	Human, Mouse, Rat
Tested Application:	ELISA, WB
Recommended dilution:WB:	1:500 - 1:2000

Image:



A431 cells were subjected to SDS PAGE followed by western blot with FNab09750(ZO1 antibody) at dilution of 1:1000