

anti- ZNF600-Specific antibody

Product Information

Catalog No.:	FNab09718
Size:	100µg
Form:	liquid
Purification:	Immunogen affinity purified
Purity:	≥95% as determined by SDS-PAGE
Host:	Rabbit
Clonality:	polyclonal
Clone ID:	None
IsoType:	IgG
Storage:	PBS with 0.02% sodium azide and 50% glycerol pH 7.3, -20°C for 12 months (Avoid repeated freeze / thaw cycles.)

Background

ZNF600 belongs to the krueppel C2H2-type zinc-finger protein family. ZNF600 may be involved in transcriptional regulation. This antibody is specific to ZNF600.

Immunogen information

Immunogen:	zinc finger protein 600
Synonyms:	DKFZp686F06123, KR ZNF1, zinc finger protein 600, ZNF600
Observed MW:	83 kDa
UniprotID :	Q6ZNG1

Application

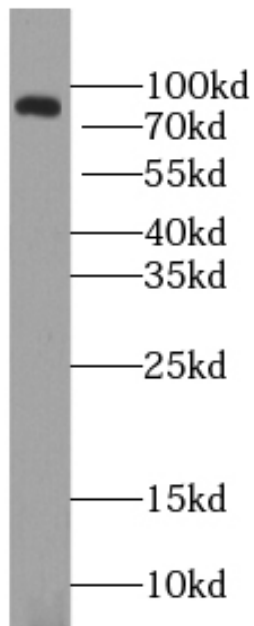
Reactivity:	Human, Mouse
Tested Application:	ELISA, WB
Recommended dilution:WB:	1:200-1:1000
Image:	

Wuhan Fine Biotech Co., Ltd.

B9 Bld, High-Tech Medical Devices Park, No. 818 GaoxinAve.East Lake High-Tech Development Zone.Wuhan, Hubei, China(430206)

Tel : (0086)027-87384275

Fax: (0086)027-87800889 www.fn-test.com



mouse kidney tissue were subjected to SDS PAGE followed by western blot with FNab09718(ZNF600-Specific Antibody) at dilution of 1:300