

anti- ZFP36L1 antibody

Product Information

| | |
|---------------|---|
| Catalog No.: | FNab09624 |
| Size: | 100µg |
| Form: | liquid |
| Purification: | Immunogen affinity purified |
| Purity: | ≥95% as determined by SDS-PAGE |
| Host: | Rabbit |
| Clonality: | polyclonal |
| Clone ID: | None |
| IsoType: | IgG |
| Storage: | PBS with 0.02% sodium azide and 50% glycerol pH 7.3, -20°C for 12 months (Avoid repeated freeze / thaw cycles.) |

Background

Probable regulatory protein involved in regulating the response to growth factors.

Immunogen information

| | |
|--------------|--|
| Immunogen: | zinc finger protein 36, C3H type-like 1 |
| Synonyms: | Berg36, BRF1, Butyrate response factor 1, cMG1, EGF response factor 1, ERF 1, ERF1, Protein TIS11B, RNF162B, TIS11B, ZFP36L1 |
| Observed MW: | 46 kDa |
| Uniprot ID : | Q07352 |

Application

| | |
|-----------------------|---|
| Reactivity: | Human, Mouse, Rat |
| Tested Application: | ELISA, WB, IHC, IF |
| Recommended dilution: | WB: 1:200-1:1000; IHC: 1:20-1:200; IF: 1:20-1:200 |
| Image: | |

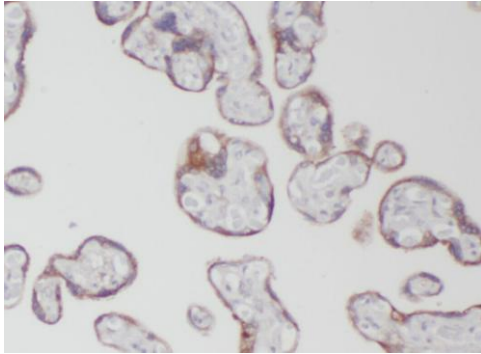
Wuhan Fine Biotech Co., Ltd.

B9 Bld, High-Tech Medical Devices Park, No. 818 Gaoxin Ave. East Lake High-Tech Development Zone. Wuhan, Hubei, China(430206)

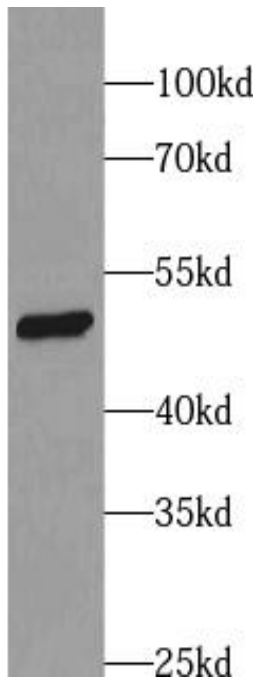
Tel : (0086)027-87384275

Fax: (0086)027-87800889

www.fn-test.com



Immunohistochemistry of paraffin-embedded human ovary tissue slide using FNab09624(ZFP36L1 Antibody) at dilution of 1:50



HeLa cells were subjected to SDS PAGE followed by western blot with FNab09624(ZFP36L1 Antibody) at dilution of 1:300