

anti- YPEL5 antibody

Product Information

Catalog No.:	FNab09570
Size:	100µg
Form:	liquid
Purification:	Immunogen affinity purified
Purity:	≥95% as determined by SDS-PAGE
Host:	Rabbit
Clonality:	polyclonal
Clone ID:	None
IsoType:	IgG
Storage:	PBS with 0.02% sodium azide and 50% glycerol pH 7.3, -20°C for 12 months (Avoid repeated freeze / thaw cycles.)

Background

None

Immunogen information

Immunogen:	yippee-like 5(Drosophila)
Synonyms:	CGI 127, Protein yippee like 5, yippee like 5(Drosophila), YPEL5
Observed MW:	14 kDa
Uniprot ID :	P62699

Application

Reactivity:	Human, Mouse, Rat
Tested Application:	ELISA, WB, IHC
Recommended dilution:WB:	1:200-1:2000; IHC: 1:10-1:100
Image:	

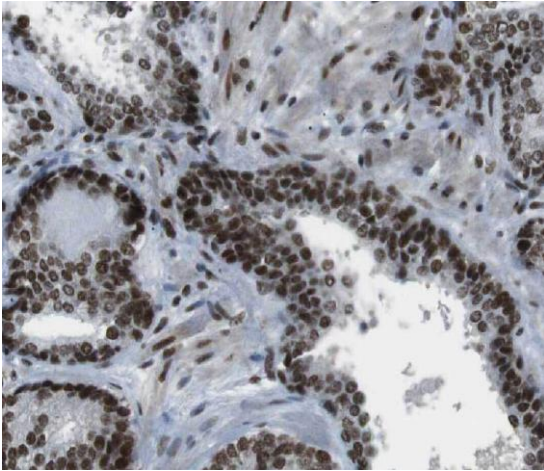
Wuhan Fine Biotech Co., Ltd.

B9 Bld, High-Tech Medical Devices Park, No. 818 Gaoxin Ave. East Lake High-Tech Development Zone. Wuhan, Hubei, China(430206)

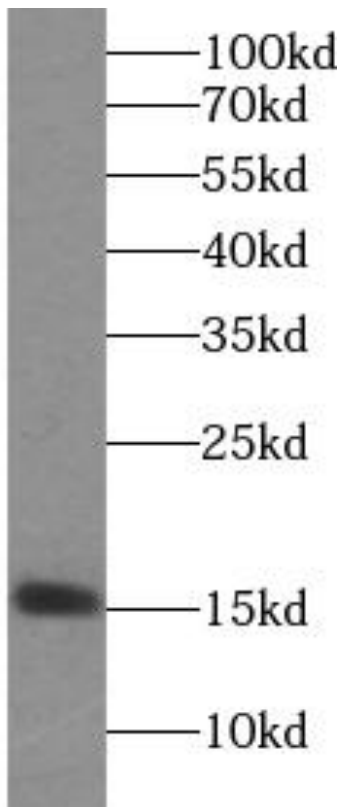
Tel : (0086)027-87384275

Fax: (0086)027-87800889

www.fn-test.com



Immunohistochemistry of paraffin-embedded human prostate cancer using FNab09570(YPEL5 antibody) at dilution of 1:25



mouse brain tissue were subjected to SDS PAGE followed by western blot with FNab09570(YPEL5 antibody) at dilution of 1:500