

anti- WSB1 antibody

Product Information

Catalog No.:	FNab09526
Size:	100µg
Form:	liquid
Purification:	Immunogen affinity purified
Purity:	≥95% as determined by SDS-PAGE
Host:	Rabbit
Clonality:	polyclonal
Clone ID:	None
IsoType:	IgG
Storage:	PBS with 0.02% sodium azide and 50% glycerol pH 7.3, -20°C for 12 months (Avoid repeated freeze / thaw cycles.)

Background

Probable substrate-recognition component of a SCF-like ECS(Elongin-Cullin-SOCS-box protein) E3 ubiquitin ligase complex which mediates the ubiquitination and subsequent proteasomal degradation of target proteins. Recognizes type II iodothyronine deiodinase/DIO2. Confers constitutive instability to HIPK2 through proteasomal degradation.

Immunogen information

Immunogen:	WD repeat and SOCS box-containing 1
Synonyms:	SWIP1, WSB 1, WSB1
Observed MW:	56 kDa
Uniprot ID :	Q9Y6I7

Application

Reactivity:	Human
Tested Application:	ELISA, WB, IF, IHC
Recommended dilution:	WB: 1:500-1:5000; IHC: 1:20-1:200; IF: 1:10-1:100

Wuhan Fine Biotech Co., Ltd.

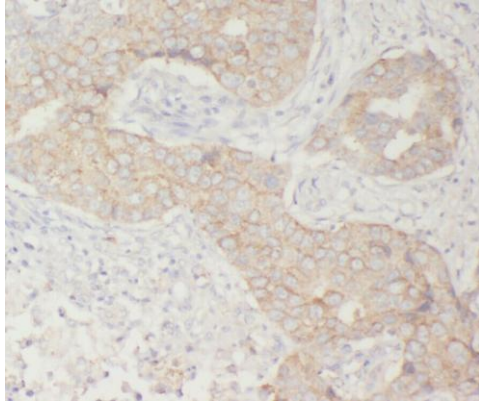
B9 Bld, High-Tech Medical Devices Park, No. 818 Gaoxin Ave. East Lake High-Tech Development Zone. Wuhan, Hubei, China(430206)

Tel : (0086)027-87384275

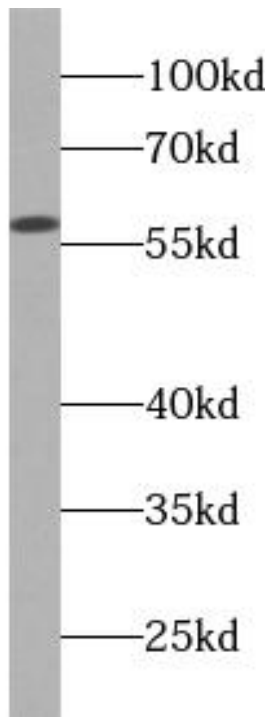
Fax: (0086)027-87800889

www.fn-test.com

Image:



Immunohistochemistry of paraffin-embedded human prostate cancer using FNab09526(WSB1 antibody) at dilution of 1:50



SGC-7901 cells were subjected to SDS PAGE followed by western blot with FNab09526(WSB1 antibody) at dilution of 1:1000

Wuhan Fine Biotech Co., Ltd.

B9 Bld, High-Tech Medical Devices Park, No. 818 Gaoxin Ave. East Lake High-Tech Development Zone. Wuhan, Hubei, China(430206)

Tel : (0086)027-87384275

Fax: (0086)027-87800889

www.fn-test.com