

anti- WIPF2 antibody

Product Information

Catalog No.:	FNab09511
Size:	100µg
Form:	liquid
Purification:	Immunogen affinity purified
Purity:	≥95% as determined by SDS-PAGE
Host:	Rabbit
Clonality:	polyclonal
Clone ID:	None
IsoType:	IgG
Storage:	PBS with 0.02% sodium azide and 50% glycerol pH 7.3, -20°C for 12 months (Avoid repeated freeze / thaw cycles.)

Background

Plays an active role in the formation of cell surface protrusions downstream of activated PDGFB receptors. Plays an important role in actin-microspike formation through cooperation with WASL. May cooperate with WASP and WASL to induce mobilization and reorganization of the actin filament system.

Immunogen information

Immunogen:	WAS/WASL interacting protein family, member 2
Synonyms:	WICH, WIP related protein, WIPF2, WIRE
Observed MW:	49 kDa
Uniprot ID :	Q8TF74

Application

Reactivity:	Human, Mouse, Rat
Tested Application:	ELISA, WB
Recommended dilution:WB:	1:500-1:5000

Wuhan Fine Biotech Co., Ltd.

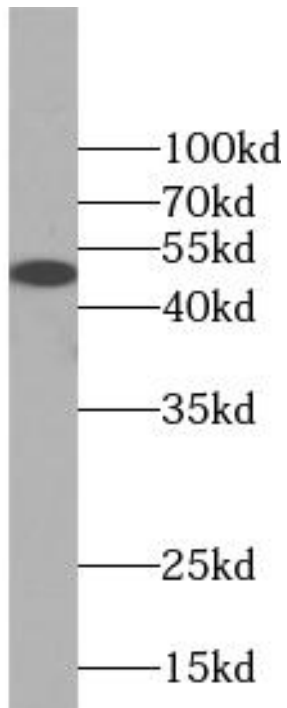
B9 Bld, High-Tech Medical Devices Park, No. 818 Gaoxin Ave. East Lake High-Tech Development Zone. Wuhan, Hubei, China(430206)

Tel : (0086)027-87384275

Fax: (0086)027-87800889

www.fn-test.com

Image:



mouse brain tissue were subjected to SDS PAGE followed by western blot with FNab09511(WIPF2 antibody) at dilution of 1:500