

anti- WFS1 antibody

Product Information

| | |
|---------------|---|
| Catalog No.: | FNab09509 |
| Size: | 100µg |
| Form: | liquid |
| Purification: | Immunogen affinity purified |
| Purity: | ≥95% as determined by SDS-PAGE |
| Host: | Rabbit |
| Clonality: | polyclonal |
| Clone ID: | None |
| IsoType: | IgG |
| Storage: | PBS with 0.02% sodium azide and 50% glycerol pH 7.3, -20°C for 12 months (Avoid repeated freeze / thaw cycles.) |

Background

Participates in the regulation of cellular Ca(2+) homeostasis, at least partly, by modulating the filling state of the endoplasmic reticulum Ca(2+) store.

Immunogen information

| | |
|--------------|---|
| Immunogen: | Wolfram syndrome 1(wolframin) |
| Synonyms: | FLJ51211, WFRS, WFS, WFS1, Wolfram syndrome 1(wolframin), WOLFRAMIN |
| Observed MW: | 100 kDa |
| Uniprot ID : | O76024 |

Application

| | |
|-----------------------|---|
| Reactivity: | Human, Mouse |
| Tested Application: | ELISA, IHC, IF, WB |
| Recommended dilution: | WB: 1:200-1:2000; IHC: 1:50-1:500; IF: 1:50-1:200 |
| Image: | |

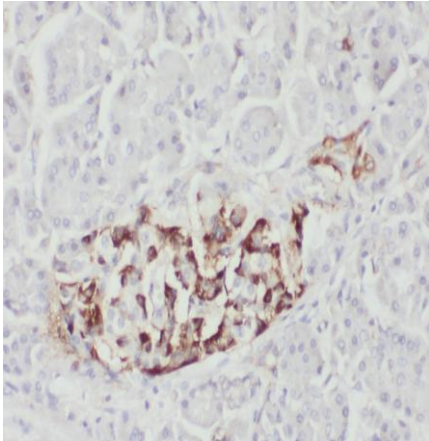
Wuhan Fine Biotech Co., Ltd.

B9 Bld, High-Tech Medical Devices Park, No. 818 Gaoxin Ave. East Lake High-Tech Development Zone. Wuhan, Hubei, China(430206)

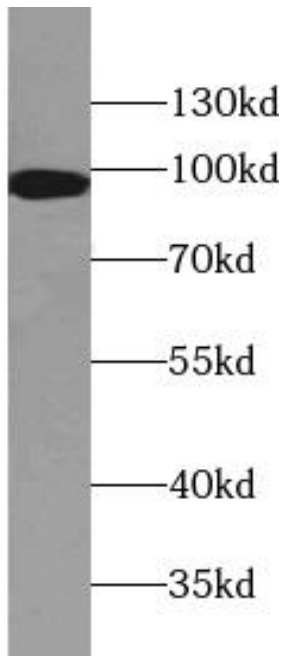
Tel : (0086)027-87384275

Fax: (0086)027-87800889

www.fn-test.com



Immunohistochemistry of paraffin-embedded human pancreas tissue slide using FNab09509(WFS1 Antibody) at dilution of 1:200



HeLa cells were subjected to SDS PAGE followed by western blot with FNab09509(WFS1 Antibody) at dilution of 1:600