

anti- WBS15/LAT2 antibody

Product Information

Catalog No.:	FNab09476
Size:	100µg
Form:	liquid
Purification:	Immunogen affinity purified
Purity:	≥95% as determined by SDS-PAGE
Host:	Rabbit
Clonality:	polyclonal
Clone ID:	None
IsoType:	IgG
Storage:	PBS with 0.02% sodium azide and 50% glycerol pH 7.3, -20°C for 12 months (Avoid repeated freeze / thaw cycles.)

Background

WBS15, also named as LAB, NTAL, WBSCR15, WBSCR5 and LAT2 (Linker for activation of T-cells family member 2; not SLC7A8/LAT2), is involved in FCER1 (high affinity immunoglobulin epsilon receptor)-mediated signaling in mast and myeloid cells. WBS15 is involved in BCR (B-cell antigen receptor)-mediated signaling in B-cells. It is located in the Williams-Beuren syndrome (WBS) critical region. WBS15 has two isoforms with MW 27-30 kDa and 12 kDa.

Immunogen information

Immunogen:	linker for activation of T cells family, member 2
Synonyms:	HSPC046, LAB, LAT2, Non T cell activation linker, NTAL, WBS15, WBSCR15, WBSCR5, WSCR5
Observed MW:	27 kDa, 14 kDa
Uniprot ID :	Q9GZY6

Application

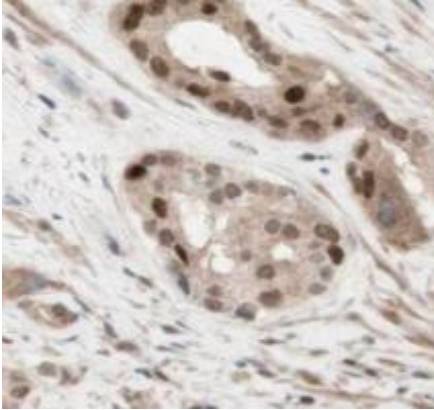
Reactivity:	Human, Mouse
Tested Application:	ELISA, IHC, WB

Wuhan Fine Biotech Co., Ltd.

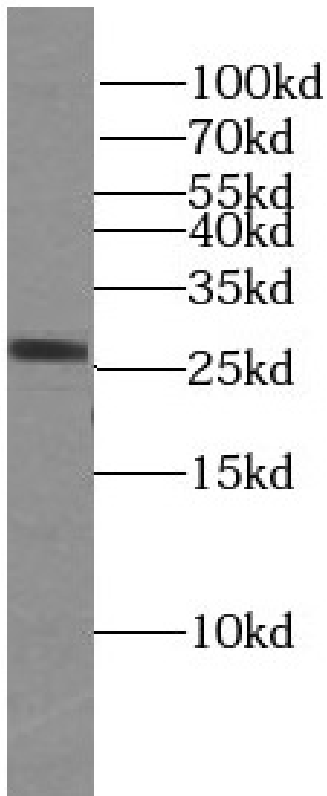
B9 Bld, High-Tech Medical Devices Park, No. 818 Gaoxin Ave. East Lake High-Tech Development Zone. Wuhan, Hubei, China (430206)

Recommended dilution: WB: 1:500-1:5000,IHC: 1:20-1:200

Image:



Immunohistochemistry of paraffin-embedded human prostate cancer using FNab09476(LAT2 antibody) at dilution of 1:50



mouse brain tissue were subjected to SDS PAGE followed by western blot with FNab09476(LAT2 antibody) at dilution of 1:1000

Wuhan Fine Biotech Co., Ltd.

B9 Bld, High-Tech Medical Devices Park, No. 818 Gaoxin Ave. East Lake High-Tech Development Zone. Wuhan, Hubei, China(430206)

Tel : (0086)027-87384275

Fax: (0086)027-87800889

www.fn-test.com