

anti- TRIM9 antibody

Product Information

| | |
|---------------|---|
| Catalog No.: | FNab08995 |
| Size: | 100µg |
| Form: | liquid |
| Purification: | Immunogen affinity purified |
| Purity: | ≥95% as determined by SDS-PAGE |
| Host: | Rabbit |
| Clonality: | polyclonal |
| Clone ID: | None |
| IsoType: | IgG |
| Storage: | PBS with 0.02% sodium azide and 50% glycerol pH 7.3, -20°C for 12 months (Avoid repeated freeze / thaw cycles.) |

Background

E3 ubiquitin-protein ligase which ubiquitinates itself in cooperation with an E2 enzyme UBE2D2/UBC4 and serves as a targeting signal for proteasomal degradation. May play a role in regulation of neuronal functions and may also participate in the formation or breakdown of abnormal inclusions in neurodegenerative disorders. May act as a regulator of synaptic vesicle exocytosis by controlling the availability of SNAP25 for the SNARE complex formation.

Immunogen information

| | |
|--------------|---|
| Immunogen: | tripartite motif-containing 9 |
| Synonyms: | KIAA0282, RING finger protein 91, RNF91, SPRING, TRIM9, tripartite motif containing 9 |
| Observed MW: | 60 kDa, 80 kDa |
| Uniprot ID : | Q9C026 |

Application

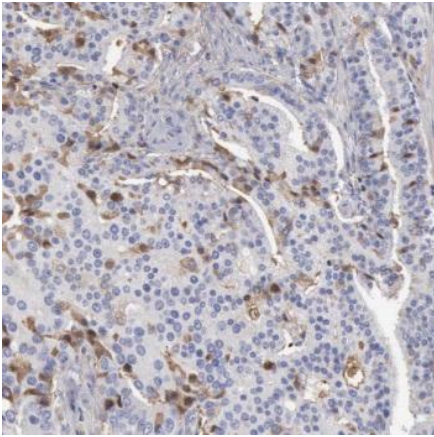
| | |
|---------------------|--------------------|
| Reactivity: | Human, Mouse, Rat |
| Tested Application: | ELISA, WB, IHC, IP |

Wuhan Fine Biotech Co., Ltd.

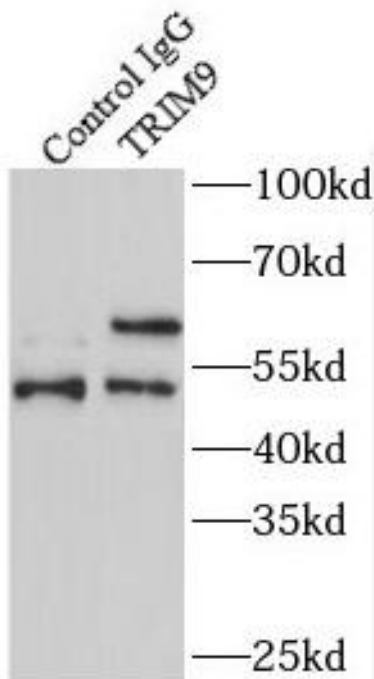
B9 Bld, High-Tech Medical Devices Park, No. 818 Gaoxin Ave. East Lake High-Tech Development Zone. Wuhan, Hubei, China(430206)

Recommended dilution: WB: 1:500-1:5000; IP: 1:500-1:5000; IHC: 1:100-1:400

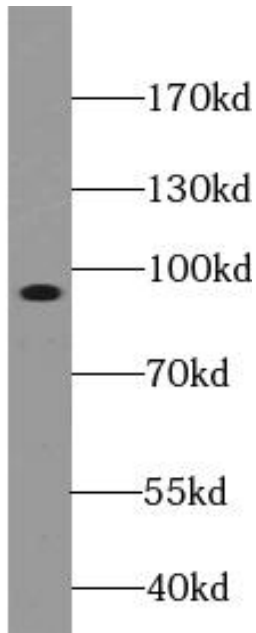
Image:



Immunohistochemistry of paraffin-embedded human prostate cancer tissue slide using FNab08995 (TRIM9 Antibody) at dilution of 1:200 heat mediated antigen retrieved with Tris-EDTA buffer (pH9).



IP Result of anti-TRIM9 (IP:FNab08995, 4ug; Detection:FNab08995 1:1000) with mouse brain tissue lysate 4000ug.



HepG2 cells were subjected to SDS PAGE followed by western blot with FNab08995(TRIM9 antibody) at dilution of 1:500