

anti- TRAPPC1 antibody

Product Information

Catalog No.:	FNab08944
Size:	100µg
Form:	liquid
Purification:	Immunogen affinity purified
Purity:	≥95% as determined by SDS-PAGE
Host:	Rabbit
Clonality:	polyclonal
Clone ID:	None
IsoType:	IgG
Storage:	PBS with 0.02% sodium azide and 50% glycerol pH 7.3, -20°C for 12 months (Avoid repeated freeze / thaw cycles.)

Background

TRAPPC1, also known as BET5 or MUM2, is a part of the multisubunit TRAPP(transport protein particle) complexes which are involved in the tethering process at different trafficking steps of vesicle transport(PMID: 16828797). TRAPPC1 may play a role in vesicular transport from endoplasmic reticulum to Golgi(PMID: 10582700).

Immunogen information

Immunogen:	trafficking protein particle complex 1
Synonyms:	BET5, BET5 homolog, Multiple myeloma protein 2, MUM 2, MUM2, TRAPPC1
Observed MW:	22 kDa
Uniprot ID :	Q9Y5R8

Application

Reactivity:	Human, Mouse, Rat
Tested Application:	ELISA, WB
Recommended dilution:WB:	1:500-1:5000

Wuhan Fine Biotech Co., Ltd.

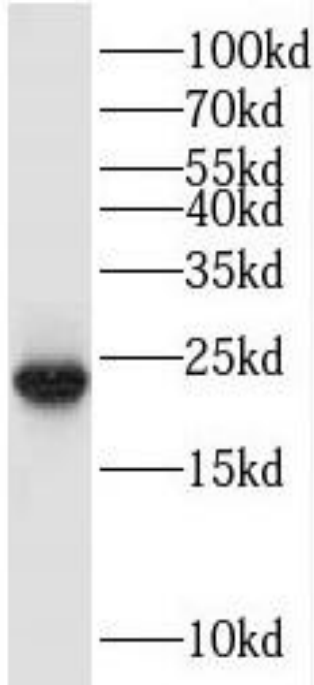
B9 Bld, High-Tech Medical Devices Park, No. 818 Gaoxin Ave. East Lake High-Tech Development Zone. Wuhan, Hubei, China(430206)

Tel : (0086)027-87384275

Fax: (0086)027-87800889

www.fn-test.com

Image:



Transfected HEK-293 cells were subjected to SDS PAGE followed by western blot with FNab08944 (TRAPPC1 Antibody) at dilution of 1:1000

Wuhan Fine Biotech Co., Ltd.

B9 Bld, High-Tech Medical Devices Park, No. 818 Gaoxin Ave. East Lake High-Tech Development Zone. Wuhan, Hubei, China (430206)

Tel : (0086)027-87384275

Fax: (0086)027-87800889

www.fn-test.com