

## anti- SUMO1 antibody

### Product Information

Catalog No.:	FNab08389
Size:	100µg
Form:	liquid
Purification:	Immunogen affinity purified
Purity:	≥95% as determined by SDS-PAGE
Host:	Rabbit
Clonality:	polyclonal
Clone ID:	None
IsoType:	IgG
Storage:	PBS with 0.02% sodium azide and 50% glycerol pH 7.3, -20°C for 12 months (Avoid repeated freeze / thaw cycles.)

### Background

This gene encodes a protein that is a member of the SUMO (small ubiquitin-like modifier) protein family. It functions in a manner similar to ubiquitin in that it is bound to target proteins as part of a post-translational modification system. However, unlike ubiquitin which targets proteins for degradation, this protein is involved in a variety of cellular processes, such as nuclear transport, transcriptional regulation, apoptosis, and protein stability. It is not active until the last four amino acids of the carboxy-terminus have been cleaved off. Several pseudogenes have been reported for this gene. Alternate transcriptional splice variants encoding different isoforms have been characterized.

### Immunogen information

Immunogen:	SMT3 suppressor of mif two 3 homolog 1 ( <i>S. cerevisiae</i> )
Synonyms:	SMT3C, SMT3H3, UBL1
Observed MW:	17 kDa
Uniprot ID :	P63165

### Application

#### Wuhan Fine Biotech Co., Ltd.

B9 Bld, High-Tech Medical Devices Park, No. 818 Gaoxin Ave. East Lake High-Tech Development Zone. Wuhan, Hubei, China(430206)

Tel : (0086)027-87384275

Fax: (0086)027-87800889

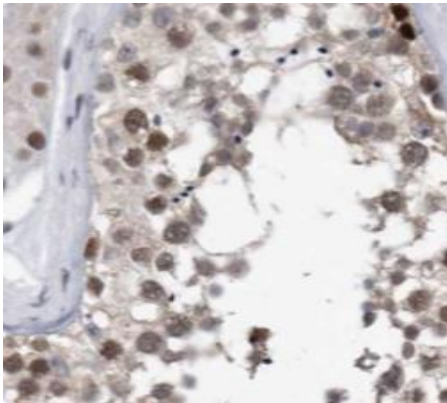
[www.fn-test.com](http://www.fn-test.com)

Reactivity: Human, Mouse, Rat

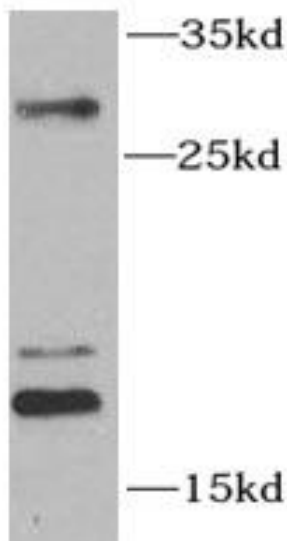
Tested Application: ELISA, WB, IHC, IF

Recommended dilution: WB: 1:500 - 1:2000; IHC: 1:50 - 1:100; IF: 1:50 - 1:200

Image:



Immunohistochemistry of paraffin-embedded human testis tissue slide using FNab08389(SUMO1 antibody) at dilution of 1:50



SW40 cells were subjected to SDS PAGE followed by western blot with FNab08389(SUMO1 antibody) at dilution of 1:1000