

anti- ST2 antibody

Product Information

Catalog No.:	FNab08261
Size:	100µg
Form:	liquid
Purification:	Immunogen affinity purified
Purity:	≥95% as determined by SDS-PAGE
Host:	Rabbit
Clonality:	polyclonal
Clone ID:	None
IsoType:	IgG
Storage:	PBS with 0.02% sodium azide and 50% glycerol pH 7.3, -20°C for 12 months (Avoid repeated freeze / thaw cycles.)

Background

Protein ST2, also known as IL1RL1, is a member of the interleukin 1 receptor family. The gene of ST2 encodes three splice variants: a soluble secreted form, a transmembrane form and a form of undetermined localization. This antibody recognizes at least 80kd, 40kd and 30kd forms in different tissues and cells.

Immunogen information

Immunogen:	interleukin 1 receptor-like 1
Synonyms:	DER4, FIT 1, IL1RL1, interleukin 1 receptor like 1, Protein ST2, ST2, ST2L, ST2V, T1
Observed MW:	30 kDa, 40 kDa
Uniprot ID :	Q01638

Application

Reactivity:	Human, Mouse, Rat
Tested Application:	ELISA, WB, IHC, IF
Recommended dilution:	WB: 1:500 - 1:2000; IHC: 1:50 - 1:200; IF: 1:50 - 1:100

1

Wuhan Fine Biotech Co., Ltd.

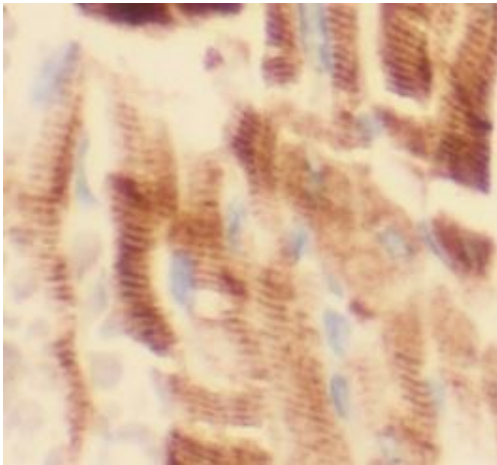
B9 Bld, High-Tech Medical Devices Park, No. 818 Gaoxin Ave. East Lake High-Tech Development Zone. Wuhan, Hubei, China(430206)

Tel : (0086)027-87384275

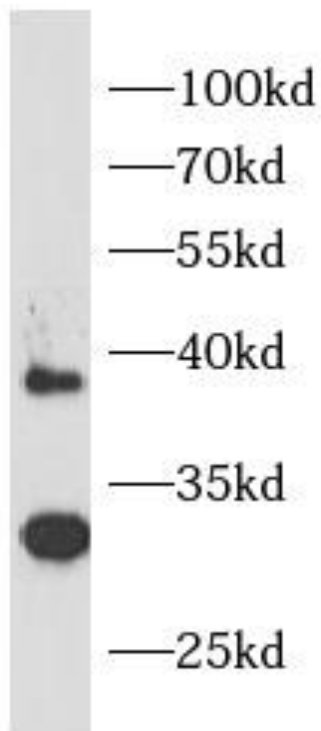
Fax: (0086)027-87800889

www.fn-test.com

Image:



Immunohistochemistry of paraffin-embedded human heart tissue slide using FNab08261(IL1RL1 Antibody) at dilution of 1:200



mouse brain tissue were subjected to SDS PAGE followed by western blot with FNab08261(IL1RL1 antibody) at dilution of 1:1000

Wuhan Fine Biotech Co., Ltd.

B9 Bld, High-Tech Medical Devices Park, No. 818 Gaoxin Ave. East Lake High-Tech Development Zone. Wuhan, Hubei, China(430206)

Tel : (0086)027-87384275

Fax: (0086)027-87800889

www.fn-test.com