

## anti- SMC6 antibody

### Product Information

Catalog No.:	FNab08020
Size:	100µg
Form:	liquid
Purification:	Immunogen affinity purified
Purity:	≥95% as determined by SDS-PAGE
Host:	Rabbit
Clonality:	polyclonal
Clone ID:	None
IsoType:	IgG
Storage:	PBS with 0.02% sodium azide and 50% glycerol pH 7.3, -20°C for 12 months (Avoid repeated freeze / thaw cycles.)

### Background

Core component of the SMC5-SMC6 complex, a complex involved in DNA double-strand breaks by homologous recombination. The complex may promote sister chromatid homologous recombination by recruiting the SMC1-SMC3 cohesin complex to double-strand breaks. The complex is required for telomere maintenance via recombination in ALT(alternative lengthening of telomeres) cell lines and mediates sumoylation of shelterin complex(telosome) components which is proposed to lead to shelterin complex disassembly in ALT-associated PML bodies(APBs). Required for recruitment of telomeres to PML nuclear bodies. SMC5-SMC6 complex may prevent transcription of episomal DNA, such as circular viral DNA genome(PubMed:26983541).

### Immunogen information

Immunogen:	structural maintenance of chromosomes 6
Synonyms:	SMC6L1
Observed MW:	130 kDa
UniprotID :	Q96SB8

### Application

1

### Wuhan Fine Biotech Co., Ltd.

B9 Bld, High-Tech Medical Devices Park, No. 818 GaoxinAve.East Lake High-Tech Development Zone.Wuhan, Hubei, China(430206)

Tel : (0086)027-87384275

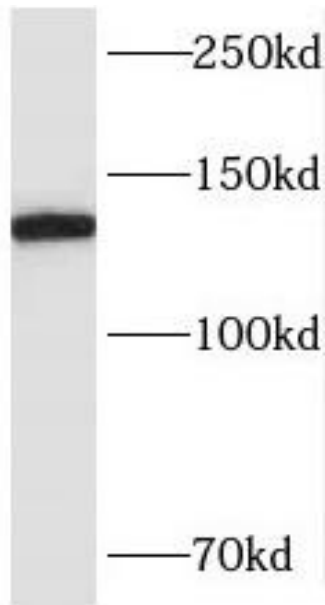
Fax: (0086)027-87800889 [www.fn-test.com](http://www.fn-test.com)

Reactivity: Human, Mouse, Rat

Tested Application: ELISA, WB

Recommended dilution: WB: 1:500-1:2000

Image:



NIH/3T3 cells were subjected to SDS PAGE followed by western blot with FNab08020(SMC6 antibody) at dilution of 1:2000

**Wuhan Fine Biotech Co., Ltd.**

B9 Bld, High-Tech Medical Devices Park, No. 818 GaoxinAve. East Lake High-Tech Development Zone. Wuhan, Hubei, China(430206)

Tel : (0086)027-87384275

Fax: (0086)027-87800889 [www.fn-test.com](http://www.fn-test.com)