

## anti- SMC1A antibody

### Product Information

Catalog No.:	FNab08016
Size:	100µg
Form:	liquid
Purification:	Immunogen affinity purified
Purity:	≥95% as determined by SDS-PAGE
Host:	Rabbit
Clonality:	polyclonal
Clone ID:	None
IsoType:	IgG
Storage:	PBS with 0.02% sodium azide and 50% glycerol pH 7.3, -20°C for 12 months (Avoid repeated freeze / thaw cycles.)

### Background

Proper cohesion of sister chromatids is a prerequisite for the correct segregation of chromosomes during cell division. The cohesin multiprotein complex is required for sister chromatid cohesion. This complex is composed partly of two structural maintenance of chromosomes (SMC) proteins, SMC3 and either SMC1B or the protein encoded by this gene. Most of the cohesin complexes dissociate from the chromosomes before mitosis, although those complexes at the kinetochore remain. Therefore, the encoded protein is thought to be an important part of functional kinetochores. In addition, this protein interacts with BRCA1 and is phosphorylated by ATM, indicating a potential role for this protein in DNA repair. This gene, which belongs to the SMC gene family, is located in an area of the X-chromosome that escapes X inactivation. Mutations in this gene result in Cornelia de Lange syndrome. Alternative splicing results in multiple transcript variants encoding different isoforms.

### Immunogen information

Immunogen:	structural maintenance of chromosomes 1A
Synonyms:	DXS423E, KIAA0178, SB1.8, SMC1, SMC1L1
Observed MW:	143-150 kDa
Uniprot ID :	Q14683

### Wuhan Fine Biotech Co., Ltd.

B9 Bld, High-Tech Medical Devices Park, No. 818 Gaoxin Ave. East Lake High-Tech Development Zone. Wuhan, Hubei, China(430206)

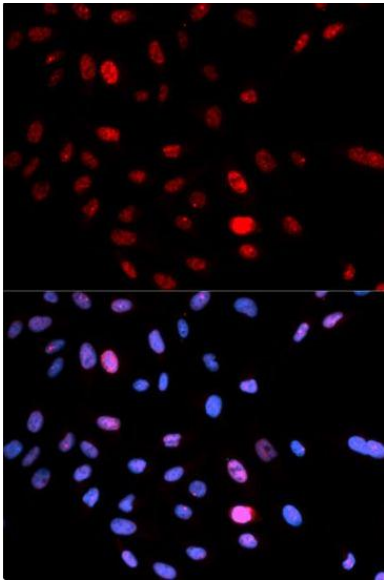
**Application**

Reactivity: Human, Mouse, Rat

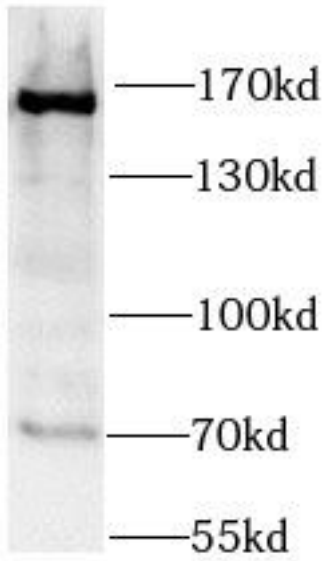
Tested Application: ELISA, WB

Recommended dilution: WB: 1:500 - 1:2000

Image:



Immunofluorescence analysis of U2OS cells using FNab08016(SMC1A antibody) at dilution of 1:50



HeLa cells were subjected to SDS PAGE followed by western blot with FNab08016(SMC1A antibody) at dilution of 1:1000