

## anti- SLC6A8 antibody

### Product Information

Catalog No.:	FNab07973
Size:	100µg
Form:	liquid
Purification:	Immunogen affinity purified
Purity:	≥95% as determined by SDS-PAGE
Host:	Rabbit
Clonality:	polyclonal
Clone ID:	None
IsoType:	IgG
Storage:	PBS with 0.02% sodium azide and 50% glycerol pH 7.3, -20°C for 12 months (Avoid repeated freeze / thaw cycles.)

### Background

Required for the uptake of creatine in muscles and brain.

### Immunogen information

Immunogen:	solute carrier family 6(neurotransmitter transporter, creatine), member 8
Synonyms:	None
Observed MW:	65-70 kDa
UniprotID :	P48029

### Application

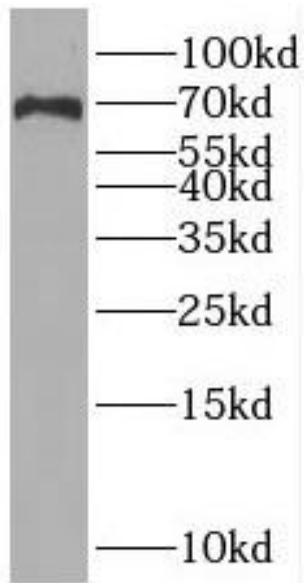
Reactivity:	Human
Tested Application:	ELISA, WB
Recommended dilution:WB:	1:500-1:2000
Image:	

### Wuhan Fine Biotech Co., Ltd.

B9 Bld, High-Tech Medical Devices Park, No. 818 GaoxinAve.East Lake High-Tech Development Zone.Wuhan, Hubei, China(430206)

Tel : (0086)027-87384275

Fax: (0086)027-87800889 [www.fn-test.com](http://www.fn-test.com)



HUVEC cells were subjected to SDS PAGE followed by western blot with FNab07973( SLC6A8 Antibody) at dilution of 1:600