

anti- SLC37A4 antibody

Product Information

Catalog No.:	FNab07958
Size:	100µ g
Form:	liquid
Purification:	Immunogen affinity purified
Purity:	≥95% as determined by SDS-PAGE
Host:	Rabbit
IsoType:	IgG
Storage:	PBS with 0.02% sodium azide and 50% glycerol pH 7.3 , -20°C for 12 months (Avoid repeated freeze / thaw cycles.)

Background

Inorganic phosphate and glucose-6-phosphate antiporter of the endoplasmic reticulum. Transports cytoplasmic glucose-6-phosphate into the lumen of the endoplasmic reticulum and translocates inorganic phosphate into the opposite direction. Forms with glucose-6-phosphatase the complex responsible for glucose production through glycogenolysis and gluconeogenesis. Hence, it plays a central role in homeostatic regulation of blood glucose levels.

Immunogen information

Immunogen:	solute carrier family 37(glucose-6-phosphate transporter), member 4
Synonyms:	G6PT1, G6PT2, G6PT3, GSD1b, GSD1c, GSD1d, PRO0685, TRG-19, TRG19
Calculated MW:	46kDa
Uniprot ID :	O43826

Application

Reactivity:	Human, Mouse, Rat
Tested Application:	ELISA, IHC, WB
Recommended dilution:	WB: 1:500-1:2000; IHC: 1:20-1:200

1

Wuhan Fine Biotech Co., Ltd.

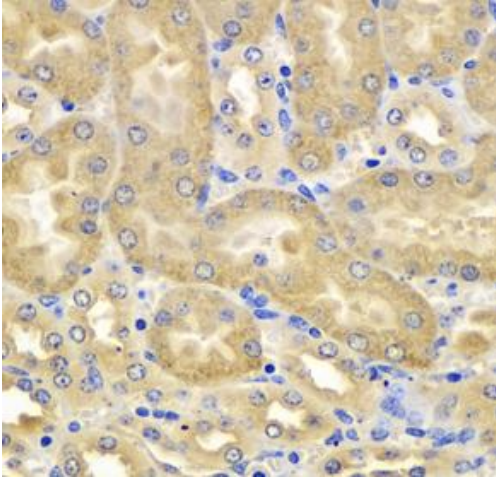
B9 Bld, High-Tech Medical Devices Park, No. 818 Gaoxin Ave. East Lake High-Tech Development Zone. Wuhan, Hubei, China(430206)

Tel : (0086)027-87384275

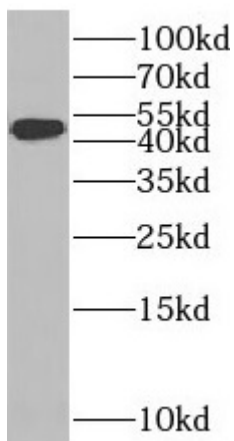
Fax: (0086)027-87800889

www.fn-test.com

Image:



Immunohistochemistry of paraffin-embedded human kidney using FNab07958(SLC37A4 antibody) at dilution of 1:50



mouse liver tissue were subjected to SDS PAGE followed by western blot with FNab07958(SLC37A4 Antibody) at dilution of 1:1000

Wuhan Fine Biotech Co., Ltd.

B9 Bld, High-Tech Medical Devices Park, No. 818 Gaoxin Ave. East Lake High-Tech Development Zone. Wuhan, Hubei, China(430206)

Tel : (0086)027-87384275

Fax: (0086)027-87800889

www.fn-test.com