

anti- SLC25A6-Specific antibody

Product Information

Catalog No.:	FNab07947
Size:	100µg
Form:	liquid
Purification:	Immunogen affinity purified
Purity:	≥95% as determined by SDS-PAGE
Host:	Rabbit
Clonality:	polyclonal
Clone ID:	None
IsoType:	IgG
Storage:	PBS with 0.02% sodium azide and 50% glycerol pH 7.3, -20°C for 12 months (Avoid repeated freeze / thaw cycles.)

Immunogen information

Immunogen:	solute carrier family 25(mitochondrial carrier; adenine nucleotide translocator), member 6
Synonyms:	None
Observed MW:	33 kDa
Uniprot ID :	P12236

Application

Reactivity:	Human, Mouse
Tested Application:	ELISA, IHC, IF, WB, IP
Recommended dilution:	WB: 1:500-1:1000; IP: 1:500-1:1000; IHC: 1:20-1:200; IF: 1:10-1:100
Image:	

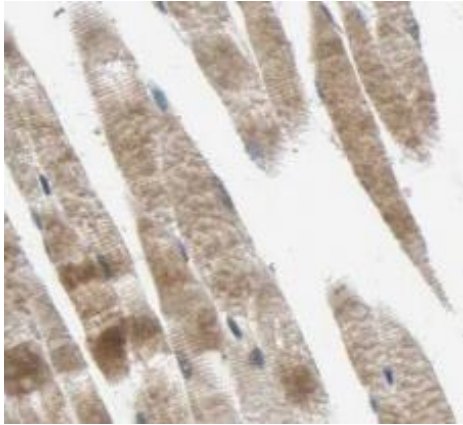
Wuhan Fine Biotech Co., Ltd.

B9 Bld, High-Tech Medical Devices Park, No. 818 Gaoxin Ave. East Lake High-Tech Development Zone. Wuhan, Hubei, China(430206)

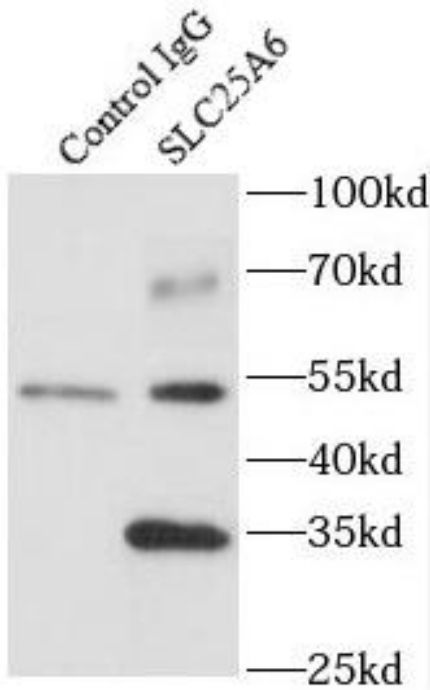
Tel : (0086)027-87384275

Fax: (0086)027-87800889

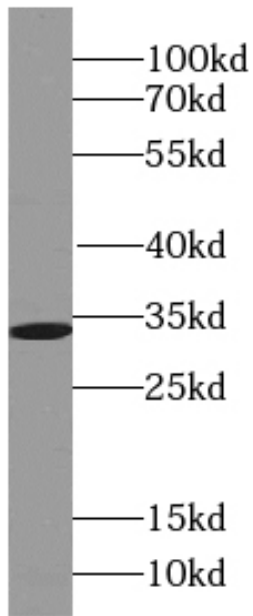
www.fn-test.com



Immunohistochemistry of paraffin-embedded human skeletal muscle using FNab07947(SLC25A6-Specific antibody) at dilution of 1:100



IP Result of anti-SLC25A6-Specific (IP:FNab07947, 4ug; Detection:FNab07947 1:500) with mouse liver tissue lysate 4000ug.



L02 cells were subjected to SDS PAGE followed by western blot with FNab07947(SLC25A6-Specific antibody) at dilution of 1:500