

## anti- SLC25A18 antibody

### Product Information

Catalog No.:	FNab07932
Size:	100µg
Form:	liquid
Purification:	Immunogen affinity purified
Purity:	≥95% as determined by SDS-PAGE
Host:	Rabbit
Clonality:	polyclonal
Clone ID:	None
IsoType:	IgG
Storage:	PBS with 0.02% sodium azide and 50% glycerol pH 7.3, -20°C for 12 months (Avoid repeated freeze / thaw cycles.)

### Background

Involved in the transport of glutamate across the inner mitochondrial membrane. Glutamate is cotransported with H(+).

### Immunogen information

Immunogen:	solute carrier family 25(mitochondrial carrier), member 18
Synonyms:	GC 2, GC2, Glutamate/H(+) symporter 2, SLC25A18
Observed MW:	32-35 kDa
Uniprot ID :	Q9H1K4

### Application

Reactivity:	Human, Mouse
Tested Application:	ELISA, WB
Recommended dilution:WB:	1:500 - 1:2000
Image:	

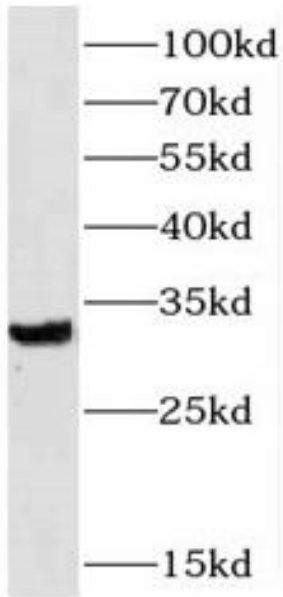
### Wuhan Fine Biotech Co., Ltd.

B9 Bld, High-Tech Medical Devices Park, No. 818 Gaoxin Ave. East Lake High-Tech Development Zone. Wuhan, Hubei, China(430206)

Tel : (0086)027-87384275

Fax: (0086)027-87800889

[www.fn-test.com](http://www.fn-test.com)



mouse liver tissue were subjected to SDS PAGE followed by western blot with FNab07932(SLC25A18 antibody) at dilution of 1:600