

anti- SLC12A5-Specific antibody

Product Information

Catalog No.:	FNab07908
Size:	100µg
Form:	liquid
Purification:	Immunogen affinity purified
Purity:	≥95% as determined by SDS-PAGE
Host:	Rabbit
Clonality:	polyclonal
Clone ID:	None
IsoType:	IgG
Storage:	PBS with 0.02% sodium azide and 50% glycerol pH 7.3, -20°C for 12 months (Avoid repeated freeze / thaw cycles.)

Background

KCC2, encoded by SLC12A5, is a neuron-specific K⁺-Cl⁻-cotransporter that is essential for Cl⁻-homeostasis and inhibitory synaptic transmission in brain. KCC2 is expressed at high levels in neurons throughout the nervous system. KCC2 deletion caused animal death. Alterations of KCC2 have been linked to neuropathic pain, temporal lobe epilepsy, and other diseases. This antibody can detect ~130 kDa monomer and ~250 kDa dimer of KCC2 in brain lysate.

Immunogen information

Immunogen:	solute carrier family 12(potassium-chloride transporter), member 5
Synonyms:	hKCC2, K Cl cotransporter 2, KCC2, KIAA1176, Neuronal K Cl cotransporter, SLC12A5
Observed MW:	126 kDa
Uniprot ID :	Q9H2X9

Application

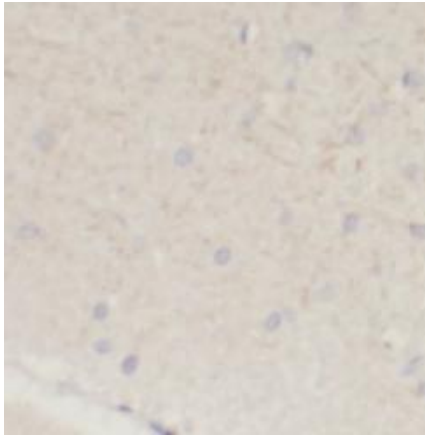
Reactivity:	Human, Mouse, Rat
Tested Application:	ELISA, WB, IHC

Wuhan Fine Biotech Co., Ltd.

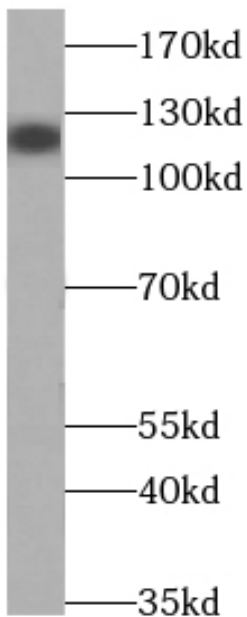
B9 Bld, High-Tech Medical Devices Park, No. 818 Gaoxin Ave. East Lake High-Tech Development Zone. Wuhan, Hubei, China(430206)

Recommended dilution: WB: 1:500-1:5000; IHC: 1:20-1:200

Image:



Immunohistochemistry of paraffin-embedded human brain using FNab07908(SLC12A5-Specific antibody) at dilution of 1:100



human brain tissue were subjected to SDS PAGE followed by western blot with FNab07908(SLC12A5-Specific antibody) at dilution of 1:300

Wuhan Fine Biotech Co., Ltd.

B9 Bld, High-Tech Medical Devices Park, No. 818 Gaoxin Ave. East Lake High-Tech Development Zone. Wuhan, Hubei, China(430206)

Tel : (0086)027-87384275

Fax: (0086)027-87800889

www.fn-test.com