

## anti- SHROOM1 antibody

### Product Information

Catalog No.:	FNab07856
Size:	100µg
Form:	liquid
Purification:	Immunogen affinity purified
Purity:	≥95% as determined by SDS-PAGE
Host:	Rabbit
Clonality:	polyclonal
Clone ID:	None
IsoType:	IgG
Storage:	PBS with 0.02% sodium azide and 50% glycerol pH 7.3, -20°C for 12 months (Avoid repeated freeze / thaw cycles.)

### Background

May be involved in the assembly of microtubule arrays during cell elongation.

### Immunogen information

Immunogen:	shroom family member 1
Synonyms:	APXL2, KIAA1960
Observed MW:	100-130 kDa
UniprotID :	Q2M3G4

### Application

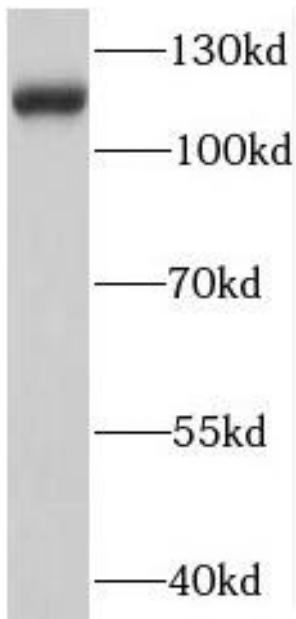
Reactivity:	Human
Tested Application:	ELISA, WB
Recommended dilution:WB:	1:500-1:2000
Image:	

### Wuhan Fine Biotech Co., Ltd.

B9 Bld, High-Tech Medical Devices Park, No. 818 GaoxinAve.East Lake High-Tech Development Zone.Wuhan, Hubei, China(430206)

Tel :( 0086)027-87384275

Fax: (0086)027-87800889 [www.fn-test.com](http://www.fn-test.com)



MCF7 cells were subjected to SDS PAGE followed by western blot with FNab07856(SHROOM1 antibody) at dilution of 1:500