

anti- SETD6 antibody

Product Information

Catalog No.:	FNab07768
Size:	100µg
Form:	liquid
Purification:	Immunogen affinity purified
Purity:	≥95% as determined by SDS-PAGE
Host:	Rabbit
Clonality:	polyclonal
Clone ID:	None
IsoType:	IgG
Storage:	PBS with 0.02% sodium azide and 50% glycerol pH 7.3, -20°C for 12 months (Avoid repeated freeze / thaw cycles.)

Background

Protein-lysine N-methyltransferase. Monomethylates 'Lys-310' of the RELA subunit of NF-kappa-B complex, leading to down-regulate NF-kappa-B transcription factor activity(PubMed:21131967). Monomethylates 'Lys-8' of H2AZ(H2AZK8me1)(PubMed:23324626). Required for the maintenance of embryonic stem cell self-renewal(By similarity).

Immunogen information

Immunogen:	SET domain containing 6
Synonyms:	None
Observed MW:	53 kDa
Uniprot ID :	Q8TBK2

Application

Reactivity:	Human, Mouse
Tested Application:	ELISA, WB
Recommended dilution:WB:	1:500-1:2000

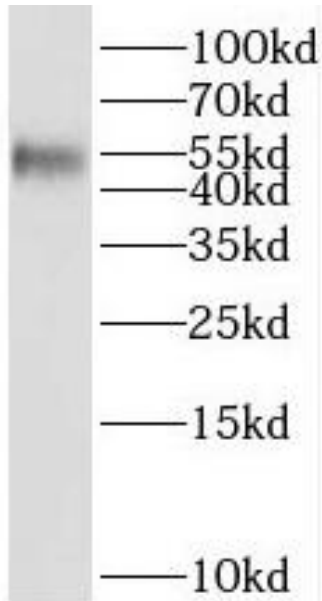
Wuhan Fine Biotech Co., Ltd.

B9 Bld, High-Tech Medical Devices Park, No. 818 Gaoxin Ave. East Lake High-Tech Development Zone. Wuhan, Hubei, China(430206)

Tel : (0086)027-87384275

Fax: (0086)027-87800889 www.fn-test.com

Image:



RAW 264.7 cells were subjected to SDS PAGE followed by western blot with FNab07768(SETD6 Antibody) at dilution of 1:600

Wuhan Fine Biotech Co., Ltd.

B9 Bld, High-Tech Medical Devices Park, No. 818 Gaoxin Ave. East Lake High-Tech Development Zone. Wuhan, Hubei, China(430206)

Tel : (0086)027-87384275

Fax: (0086)027-87800889 www.fn-test.com