

SEC24C antibody

Product Information

Catalog No.:	FNab07682
Size:	100µg
Form:	liquid
Purification:	Immunogen affinity purified
Purity:	≥95% as determined by SDS-PAGE
Host:	Rabbit
Clonality:	polyclonal
IsoType:	IgG
Storage:	PBS with 0.02% sodium azide and 50% glycerol pH 7.3, -20°C for 12 months (Avoid repeated freeze / thaw cycles.)

Background

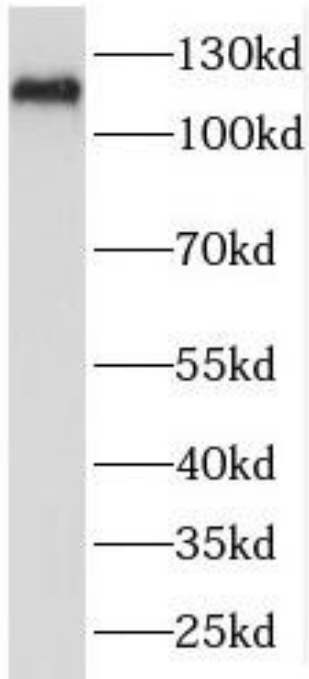
Component of the COPII coat, that covers ER-derived vesicles involved in transport from the endoplasmic reticulum to the Golgi apparatus. COPII acts in the cytoplasm to promote the transport of secretory, plasma membrane, and vacuolar proteins from the endoplasmic reticulum to the Golgi complex.

Immunogen information

Immunogen:	SEC24 family, member C
Synonyms:	KIAA0079
Observed MW:	110-120 kDa
Uniprot ID :	P53992

Application

Reactivity:	Human
Tested Application:	ELISA, WB
Recommended dilution:WB:	1:500-1:2000
Image:	



HeLa cells were subjected to SDS PAGE followed by western blot with FNab07682(SEC24C antibody) at dilution of 1:500