

## anti- SCML1 antibody

### Product Information

Catalog No.:	FNab07639
Size:	100µg
Form:	liquid
Purification:	Immunogen affinity purified
Purity:	≥95% as determined by SDS-PAGE
Host:	Rabbit
Clonality:	polyclonal
Clone ID:	None
IsoType:	IgG
Storage:	PBS with 0.02% sodium azide and 50% glycerol pH 7.3, -20°C for 12 months (Avoid repeated freeze / thaw cycles.)

### Background

Putative Polycombgroup(PcG) protein. PcG proteins act by forming multiprotein complexes, which are required to maintain the transcriptionally repressive state of homeotic genes throughout development. May be involved in spermatogenesis during sexual maturation(By similarity).

### Immunogen information

Immunogen:	sex comb on midleg-like 1(Drosophila)
Synonyms:	None
Observed MW:	23 kDa
UniprotID :	Q9UN30

### Application

Reactivity:	Human, Mouse
Tested Application:	ELISA, WB, IF
Recommended dilution:WB:	1:500-1:2000; IF: 1:20-1:200

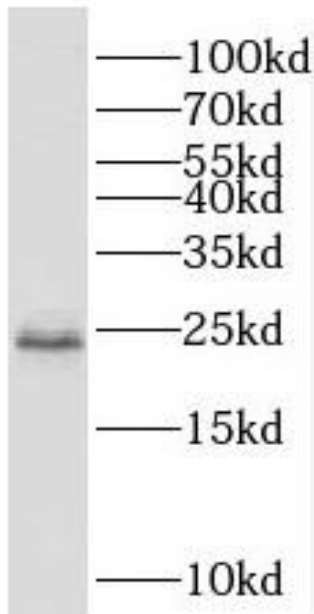
### Wuhan Fine Biotech Co., Ltd.

B9 Bld, High-Tech Medical Devices Park, No. 818 GaoxinAve.East Lake High-Tech Development Zone.Wuhan, Hubei, China(430206)

Tel :( 0086)027-87384275

Fax: (0086)027-87800889 [www.fn-test.com](http://www.fn-test.com)

Image:



HepG2 cells were subjected to SDS PAGE followed by western blot with FNab07639(SCML1 antibody) at dilution of 1:400

**Wuhan Fine Biotech Co., Ltd.**

B9 Bld, High-Tech Medical Devices Park, No. 818 GaoxinAve. East Lake High-Tech Development Zone. Wuhan, Hubei, China(430206)

Tel : (0086)027-87384275

Fax: (0086)027-87800889 [www.fn-test.com](http://www.fn-test.com)