

## anti- SCCPDH antibody

### Product Information

Catalog No.:	FNab07626
Size:	100µg
Form:	liquid
Purification:	Immunogen affinity purified
Purity:	≥95% as determined by SDS-PAGE
Host:	Rabbit
Clonality:	polyclonal
Clone ID:	None
IsoType:	IgG
Storage:	PBS with 0.02% sodium azide and 50% glycerol pH 7.3, -20°C for 12 months (Avoid repeated freeze / thaw cycles.)

### Background

None

### Immunogen information

Immunogen:	saccharopinedehydrogenase(putative)
Synonyms:	None
Observed MW:	40-47 kDa
UniprotID :	Q8NBX0

### Application

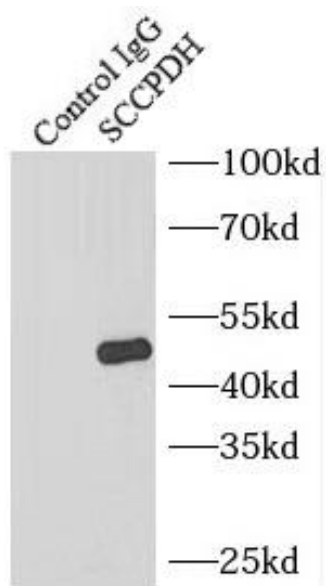
Reactivity:	Human, Mouse
Tested Application:	ELISA, IP, WB
Recommended dilution:	WB: 1:500-1:2000; IP: 1:200-1:1000
Image:	

### Wuhan Fine Biotech Co., Ltd.

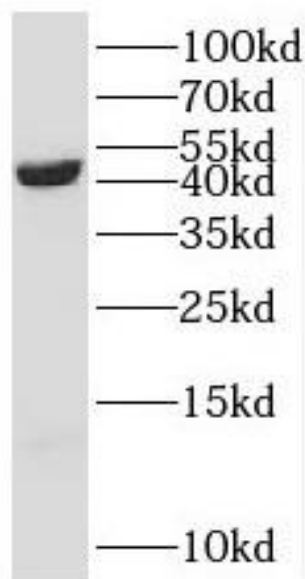
B9 Bld, High-Tech Medical Devices Park, No. 818 GaoxinAve.East Lake High-Tech Development Zone.Wuhan, Hubei, China(430206)

Tel : (0086)027-87384275

Fax: (0086)027-87800889 [www.fn-test.com](http://www.fn-test.com)



IP Result of anti-SCCPDH (IP:FNab07626, 3ug;  
Detection:FNab07626 1:300) with COLO 320 cells  
lysate 1700ug.



COLO 320 cells were subjected to SDS PAGE  
followed by western blot with  
FNab07626( SCCPDH Antibody) at dilution of  
1:1000