

anti- SATB1 antibody

Product Information

Catalog No.:	FNab07615
Size:	100µg
Form:	liquid
Purification:	Immunogen affinity purified
Purity:	≥95% as determined by SDS-PAGE
Host:	Rabbit
Clonality:	polyclonal
Clone ID:	None
IsoType:	IgG
Storage:	PBS with 0.02% sodium azide and 50% glycerol pH 7.3, -20°C for 12 months (Avoid repeated freeze / thaw cycles.)

Background

Crucial silencing factor contributing to the initiation of X inactivation mediated by Xist RNA that occurs during embryogenesis and in lymphoma(By similarity). Binds to DNA at special AT-rich sequences, the consensus SATB1-binding sequence(CSBS), at nuclear matrix-or scaffold-associated regions. Thought to recognize the sugar-phosphate structure of double-stranded DNA. Transcriptional repressor controlling nuclear and viral gene expression in a phosphorylated and acetylated status-dependent manner, by binding to matrix attachment regions(MARs) of DNA and inducing a local chromatin-loop remodeling. Acts as a docking site for several chromatin remodeling enzymes(e.g. PML at the MHC-I locus) and also by recruiting corepressors(HDACs) or coactivators(HATs) directly to promoters and enhancers. Modulates genes that are essential in the maturation of the immune T-cell CD8SP from thymocytes. Required for the switching of fetal globin species, and beta-and gamma-globin genes regulation during erythroid differentiation.Plays a role in chromatin organization and nuclear architecture during apoptosis. Interacts with the unique region(UR) of cytomegalovirus(CMV). Alu-like motifs and SATB1-binding sites provide a unique chromatin context which seems preferentially targeted by the HIV-1 integration machinery. Moreover, HIV-1 Tat may overcome SATB1-mediated repression of IL2 and IL2RA(interleukin) in T-cells by binding to the same domain than HDAC1. Delineates specific epigenetic modifications at target gene loci, directly up-regulating metastasis-associated genes while down-regulating tumor-suppressor genes.Reprograms chromatin organization and the transcription profiles of breast tumors to promote growth and metastasis.

Wuhan Fine Biotech Co., Ltd.

B9 Bld, High-Tech Medical Devices Park, No. 818 GaoxinAve.East Lake High-Tech Development Zone.Wuhan, Hubei, China(430206)

Tel :(0086)027-87384275

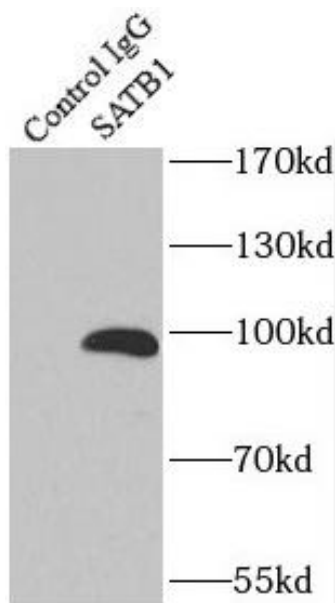
Fax: (0086)027-87800889 www.fn-test.com

Immunogen information

Immunogen: SATB homeobox 1
Synonyms: None
Observed MW: 100 kDa
UniprotID : Q01826

Application

Reactivity: Human, Mouse, Rat
Tested Application: ELISA, WB, IP
Recommended dilution: WB: 1:500-1:2000; IP: 1:200-1:2000
Image:



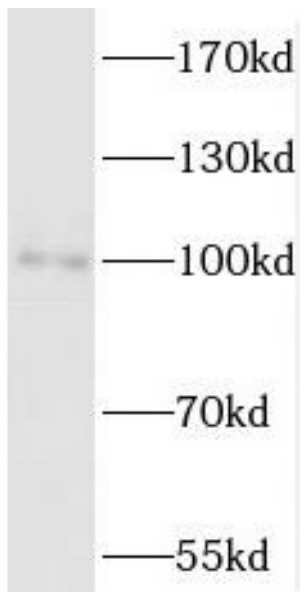
IP Result of anti-SATB1 (IP:FNab07615, 4ug;
Detection:FNab07615 1:500) with HEK-293 cells
lysate 2000ug.

Wuhan Fine Biotech Co., Ltd.

B9 Bld, High-Tech Medical Devices Park, No. 818 GaoxinAve.East Lake High-Tech Development Zone.Wuhan,
Hubei, China(430206)

Tel :(0086)027-87384275

Fax: (0086)027-87800889 www.fn-test.com



human brain tissue were subjected to SDS PAGE followed by western blot with FNab07615(SATB1 antibody) at dilution of 1:4000