

anti- RPL38 antibody

Product Information

Catalog No.:	FNab07437
Size:	100µg
Form:	liquid
Purification:	Immunogen affinity purified
Purity:	≥95% as determined by SDS-PAGE
Host:	Rabbit
Clonality:	polyclonal
Clone ID:	None
IsoType:	IgG
Storage:	PBS with 0.02% sodium azide and 50% glycerol pH 7.3, -20°C for 12 months (Avoid repeated freeze / thaw cycles.)

Background

None

Immunogen information

Immunogen:	ribosomal protein L38
Synonyms:	60S ribosomal protein L38, ribosomal protein L38, RPL38
Observed MW:	8 kDa
Uniprot ID :	P63173

Application

Reactivity:	Human, Mouse, Rat
Tested Application:	ELISA, WB, IHC, IF
Recommended dilution:	WB: 1:500-1:5000; IHC: 1:20-1:200; IF: 1:50-1:500
Image:	

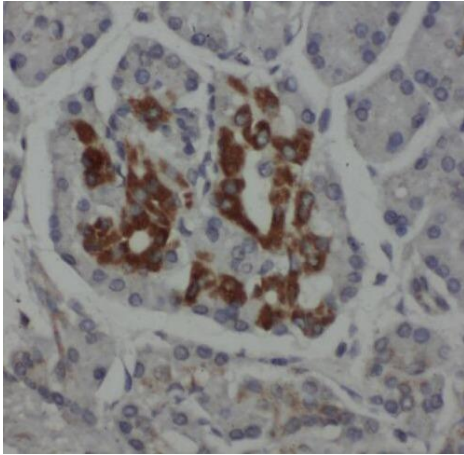
Wuhan Fine Biotech Co., Ltd.

B9 Bld, High-Tech Medical Devices Park, No. 818 Gaoxin Ave. East Lake High-Tech Development Zone. Wuhan, Hubei, China(430206)

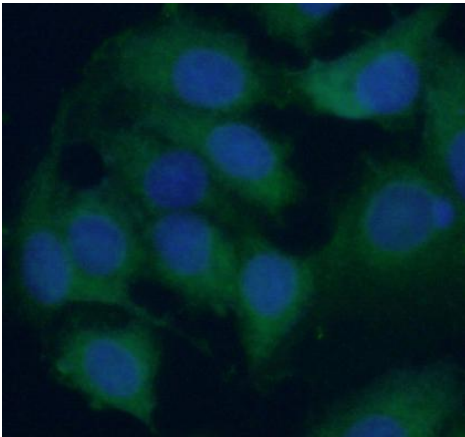
Tel : (0086)027-87384275

Fax: (0086)027-87800889

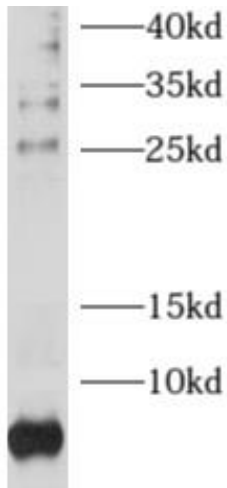
www.fn-test.com



Immunohistochemistry of paraffin-embedded human pancreas cancer using FNab07437(RPL38 antibody) at dilution of 1:50



Immunofluorescent analysis of (-20°C Ethanol) fixed MCF-7 cells using FNab07437 (RPL38 Antibody) at dilution of 1:50 and Alexa Fluor 488-conjugated Goat Anti-Rabbit IgG(H+L)



HeLa cells were subjected to SDS PAGE followed by western blot with FNab07437(RPL38 antibody) at dilution of 1:500