

## anti- RPL3 antibody

### Product Information

Catalog No.:	FNab07430
Size:	100µg
Form:	liquid
Purification:	Protein A+G purification
Purity:	≥95% as determined by SDS-PAGE
Host:	Mouse
Clonality:	monoclonal
Clone ID:	3F3
IsoType:	IgG1
Storage:	PBS with 0.02% sodium azide and 50% glycerol pH 7.3, -20°C for 12 months (Avoid repeated freeze / thaw cycles.)

### Background

The L3 protein is a component of the large subunit of cytoplasmic ribosomes.

### Immunogen information

Immunogen:	ribosomal protein L3
Synonyms:	None
Observed MW:	46 kDa
UniprotID :	P39023

### Application

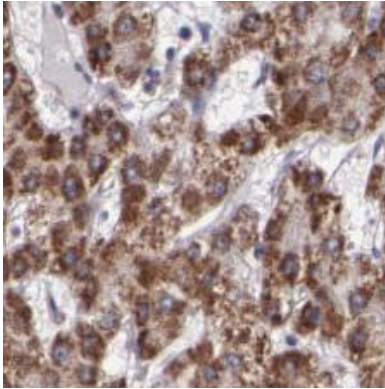
Reactivity:	Human
Tested Application:	ELISA, WB, IHC, IF
Recommended dilution:	WB: 1:1000-1:8000; IHC: 1:50-1:500; IF: 1:20-1:100
Image:	

### Wuhan Fine Biotech Co., Ltd.

B9 Bld, High-Tech Medical Devices Park, No. 818 GaoxinAve. East Lake High-Tech Development Zone. Wuhan, Hubei, China(430206)

Tel : (0086)027-87384275

Fax: (0086)027-87800889 [www.fn-test.com](http://www.fn-test.com)



Immunohistochemistry of paraffin-embedded human liver cancer tissue slide using FNab07430(RPL3 Antibody) at dilution of 1:600 heat mediated antigen retrieved with Tris-EDTA buffer(pH9).

Western blot analysis of RPL3 in various cell lines using Fine Test antibody FNab07430

