

anti- RPAP1 antibody

Product Information

Catalog No.:	FNab07395
Size:	100µg
Form:	liquid
Purification:	Immunogen affinity purified
Purity:	≥95% as determined by SDS-PAGE
Host:	Rabbit
Clonality:	polyclonal
Clone ID:	None
IsoType:	IgG
Storage:	PBS with 0.02% sodium azide and 50% glycerol pH 7.3, -20°C for 12 months (Avoid repeated freeze / thaw cycles.)

Background

Forms an interface between the RNA polymerase II enzyme and chaperone/scaffolding protein, suggesting that it is required to connect RNA polymerase II to regulators of protein complex formation. Required for interaction of the RNA polymerase II complex with acetylated histone H3.

Immunogen information

Immunogen:	RNA polymerase II associated protein 1
Synonyms:	KIAA1403
Observed MW:	153 kDa
UniprotID :	Q9BWH6

Application

Reactivity:	Human, Mouse, Rat
Tested Application:	ELISA, IP, WB
Recommended dilution:	WB: 1:500-1:2000; IP: 1:200-1:1000

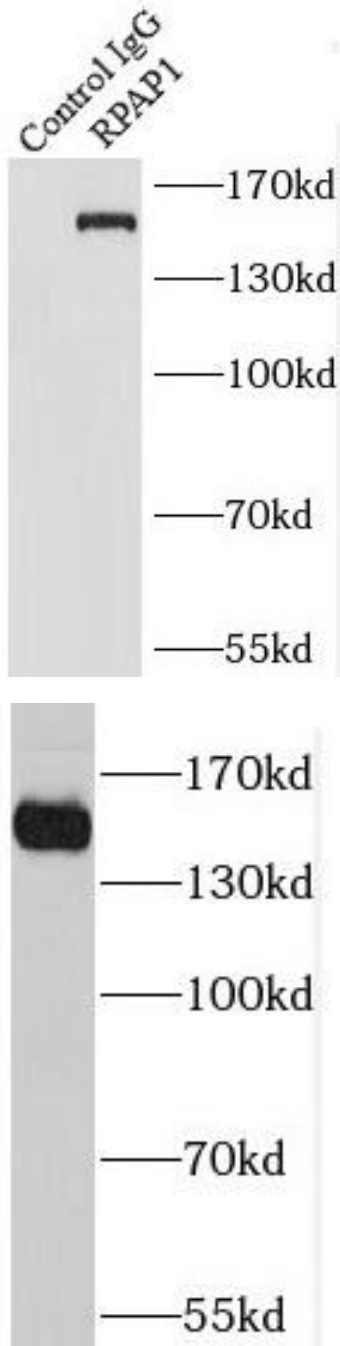
Wuhan Fine Biotech Co., Ltd.

B9 Bld, High-Tech Medical Devices Park, No. 818 GaoxinAve. East Lake High-Tech Development Zone. Wuhan, Hubei, China(430206)

Tel : (0086)027-87384275

Fax: (0086)027-87800889 www.fn-test.com

Image:



IP Result of anti-RPAP1 (IP:FNab07395, 3ug;
Detection:FNab07395 1:800) with HeLa cells
lysate 3000ug.

HeLa cells were subjected to SDS PAGE followed
by western blot with FNab07395(RPAP1 antibody)
at dilution of 1:800