

anti- RNF40 antibody

Product Information

| | |
|---------------|---|
| Catalog No.: | FNab07358 |
| Size: | 100µg |
| Form: | liquid |
| Purification: | Immunogen affinity purified |
| Purity: | ≥95% as determined by SDS-PAGE |
| Host: | Rabbit |
| Clonality: | polyclonal |
| Clone ID: | None |
| IsoType: | IgG |
| Storage: | PBS with 0.02% sodium azide and 50% glycerol pH 7.3, -20°C for 12 months (Avoid repeated freeze / thaw cycles.) |

Background

The protein encoded by this gene contains a RING finger, a motif known to be involved in protein-protein and protein-DNA interactions. This protein was reported to interact with the tumor suppressor protein RB1. Studies of the rat counterpart suggested that this protein may function as an E3 ubiquitin-protein ligase, and facilitate the ubiquitination and degradation of syntaxin 1, which is an essential component of the neurotransmitter release machinery. Multiple alternatively spliced transcript variants encoding different isoforms have been found for this gene.

Immunogen information

| | |
|--------------|------------------------|
| Immunogen: | ring finger protein 40 |
| Synonyms: | BRE1B, KIAA0661 |
| Observed MW: | 140 kDa |
| UniprotID : | O75150 |

Application

| | |
|---------------------|-----------------------|
| Reactivity: | Human |
| Tested Application: | ELISA, WB, IHC, IF,IP |

Wuhan Fine Biotech Co., Ltd.

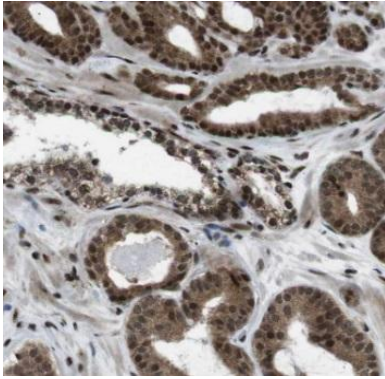
B9 Bld, High-Tech Medical Devices Park, No. 818 GaoxinAve.East Lake High-Tech Development Zone.Wuhan, Hubei, China(430206)

Tel : (0086)027-87384275

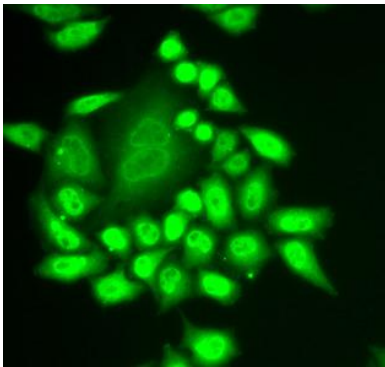
Fax: (0086)027-87800889 www.fn-test.com

Recommended dilution: WB: 1:500 - 1:2000; IHC: 1:50 - 1:200; IF: 1:20 - 1:100; ChIP : 1:50 - 1:200

Image:



Immunohistochemistry of paraffin-embedded human testis using FNab07358(RNF40 antibody) at dilution of 1:50



Immunofluorescence analysis of MCF-7 cells using FNab07358(RNF40 Antibody) at dilution of 1:50

HepG2 cells were subjected to SDS PAGE followed by western blot with FNab07358(RNF40 antibody) at dilution of 1:1000

