

anti- RILPL1 antibody

Product Information

Catalog No.:	FNab07299
Size:	100µg
Form:	liquid
Purification:	Immunogen affinity purified
Purity:	≥95% as determined by SDS-PAGE
Host:	Rabbit
Clonality:	polyclonal
Clone ID:	None
IsoType:	IgG
Storage:	PBS with 0.02% sodium azide and 50% glycerol pH 7.3, -20°C for 12 months (Avoid repeated freeze / thaw cycles.)

Background

Plays a role in the regulation of cell shape and polarity. Plays a role in cellular protein transport, including protein transport away from primary cilia. Neuroprotective protein, which acts by sequestering GAPDH in the cytosol and prevent the apoptotic function of GAPDH in the nucleus. Competes with SIAH1 for binding GAPDH(By similarity). Does not regulate lysosomal morphology and distribution.

Immunogen information

Immunogen:	Rab interacting lysosomal protein-like 1
Synonyms:	RLP1
Observed MW:	50 kDa
Uniprot ID :	Q5EBL4

Application

Reactivity:	Human, Mouse, Rat
Tested Application:	ELISA, WB
Recommended dilution:WB:	1:500-1:2000

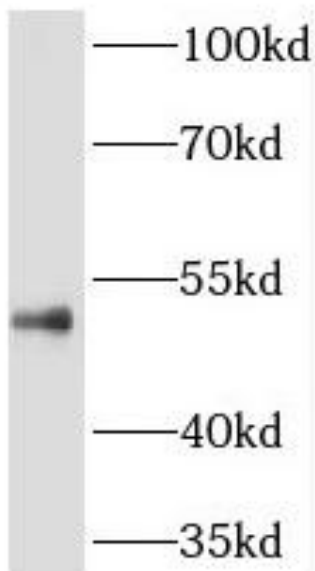
Wuhan Fine Biotech Co., Ltd.

B9 Bld, High-Tech Medical Devices Park, No. 818 Gaoxin Ave. East Lake High-Tech Development Zone. Wuhan, Hubei, China(430206)

Tel : (0086)027-87384275

Fax: (0086)027-87800889 www.fn-test.com

Image:



HepG2 cells were subjected to SDS PAGE followed by western blot with FNab07299(RILPL1 Antibody) at dilution of 1:600

Wuhan Fine Biotech Co., Ltd.

B9 Bld, High-Tech Medical Devices Park, No. 818 Gaoxin Ave. East Lake High-Tech Development Zone. Wuhan, Hubei, China(430206)

Tel : (0086)027-87384275

Fax: (0086)027-87800889 www.fn-test.com