

anti- RHOBTB3 antibody

Product Information

| | |
|---------------|---|
| Catalog No.: | FNab07283 |
| Size: | 100µg |
| Form: | liquid |
| Purification: | Immunogen affinity purified |
| Purity: | ≥95% as determined by SDS-PAGE |
| Host: | Rabbit |
| Clonality: | polyclonal |
| Clone ID: | None |
| IsoType: | IgG |
| Storage: | PBS with 0.02% sodium azide and 50% glycerol pH 7.3, -20°C for 12 months (Avoid repeated freeze / thaw cycles.) |

Background

Rab9-regulated ATPase required for endosome to Golgi transport. Involved in transport vesicle docking at the Golgi complex, possibly by participating in release M6PRBP1/TIP47 from vesicles to permit their efficient docking and fusion at the Golgi. Specifically binds Rab9, but not other Rab proteins. Has low intrinsic ATPase activity due to autoinhibition, which is relieved by Rab9.

Immunogen information

| | |
|--------------|-------------------------------------|
| Immunogen: | Rho-related BTB domain containing 3 |
| Synonyms: | KIAA0878 |
| Observed MW: | 69 kDa |
| UniprotID : | O94955 |

Application

| | |
|-----------------------|-----------------------------------|
| Reactivity: | Human, Mouse, Rat |
| Tested Application: | ELISA, WB, IHC |
| Recommended dilution: | WB: 1:500-1:2000; IHC: 1:20-1:200 |

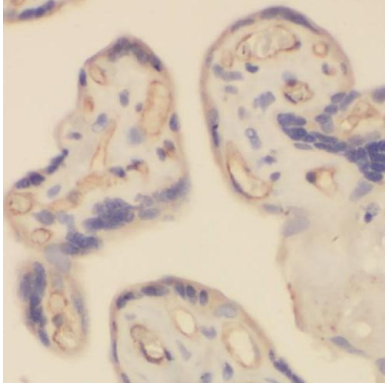
Wuhan Fine Biotech Co., Ltd.

B9 Bld, High-Tech Medical Devices Park, No. 818 GaoxinAve. East Lake High-Tech Development Zone. Wuhan, Hubei, China(430206)

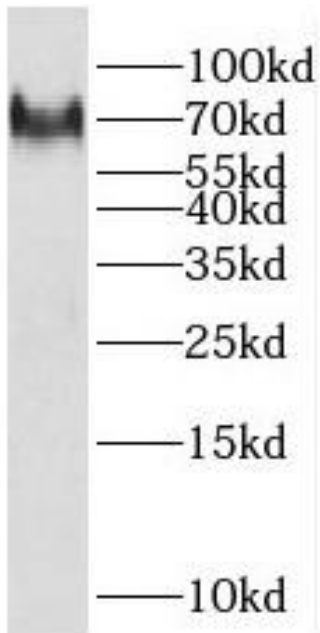
Tel : (0086)027-87384275

Fax: (0086)027-87800889 www.fn-test.com

Image:



Immunohistochemistry of paraffin-embedded human placenta tissue slide using FNab07283(RHOBTB3 Antibody) at dilution of 1:50



K-562 cells were subjected to SDS PAGE followed by western blot with FNab07283(RHOBTB3 antibody) at dilution of 1:1000

Wuhan Fine Biotech Co., Ltd.

B9 Bld, High-Tech Medical Devices Park, No. 818 GaoxinAve. East Lake High-Tech Development Zone. Wuhan, Hubei, China(430206)

Tel : (0086)027-87384275

Fax: (0086)027-87800889 www.fn-test.com