

## anti- RCL1 antibody

### Product Information

Catalog No.:	FNab07211
Size:	100µg
Form:	liquid
Purification:	Immunogen affinity purified
Purity:	≥95% as determined by SDS-PAGE
Host:	Rabbit
Clonality:	polyclonal
Clone ID:	None
IsoType:	IgG
Storage:	PBS with 0.02% sodium azide and 50% glycerol pH 7.3, -20°C for 12 months (Avoid repeated freeze / thaw cycles.)

### Background

Does not have cyclase activity. Plays a role in 40S-ribosomal-subunit biogenesis in the early pre-rRNA processing steps at sites A0, A1 and A2 that are required for proper maturation of the 18S RNA(By similarity).

### Immunogen information

Immunogen:	RNA terminal phosphate cyclase-like 1
Synonyms:	RNAC, RPC2, RPCL1, RTC2
Observed MW:	41 kDa
UniprotID :	Q9Y2P8

### Application

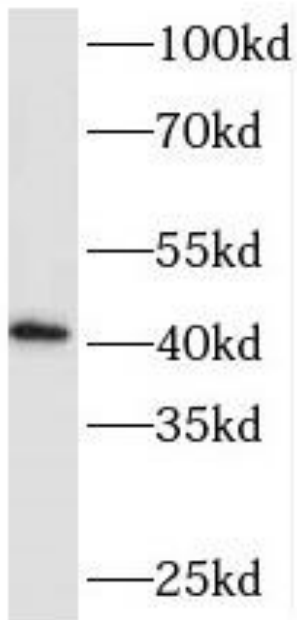
Reactivity:	Human, Mouse, Rat
Tested Application:	ELISA, WB, IF
Recommended dilution:	WB: 1:500-1:2000; IF: 1:20-1:200
Image:	

### Wuhan Fine Biotech Co., Ltd.

B9 Bld, High-Tech Medical Devices Park, No. 818 GaoxinAve.East Lake High-Tech Development Zone.Wuhan, Hubei, China(430206)

Tel : (0086)027-87384275

Fax: (0086)027-87800889 [www.fn-test.com](http://www.fn-test.com)



A431 cells were subjected to SDS PAGE followed by western blot with FNab07211(RCL1 antibody) at dilution of 1:1000