

anti- RBM15 antibody

Product Information

Catalog No.:	FNab07162
Size:	100µg
Form:	liquid
Purification:	Immunogen affinity purified
Purity:	≥95% as determined by SDS-PAGE
Host:	Rabbit
Clonality:	polyclonal
Clone ID:	None
IsoType:	IgG
Storage:	PBS with 0.02% sodium azide and 50% glycerol pH 7.3, -20°C for 12 months (Avoid repeated freeze / thaw cycles.)

Background

May function as an mRNA export factor, stimulating export and expression of RTE-containing mRNAs which are present in many retrotransposons that require to be exported prior to splicing. High affinity binding of pre-mRNA to RBM15 may allow targeting of the mRNP to the export helicase DBP5 in a manner that is independent of splicing-mediated NXF1 deposition, resulting in export prior to splicing. May be implicated in HOX gene regulation.

Immunogen information

Immunogen:	RNA binding motif protein 15
Synonyms:	FLJ12479, FLJ21943, One twenty two protein 1, OTT, OTT1, RBM15, RNA binding motif protein 15, SPEN
Observed MW:	100-107 kDa
Uniprot ID :	Q96T37

Application

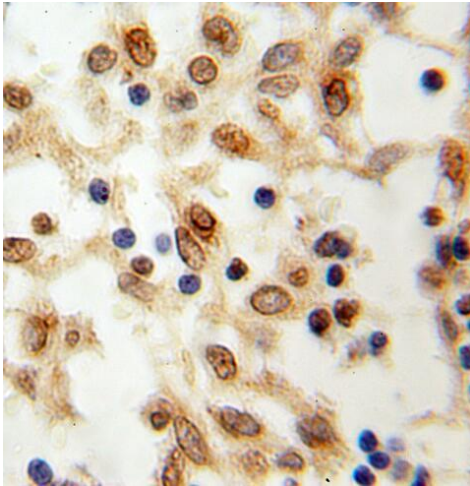
Reactivity:	Human, Mouse, Rat
Tested Application:	ELISA, WB, IHC, IF

Wuhan Fine Biotech Co., Ltd.

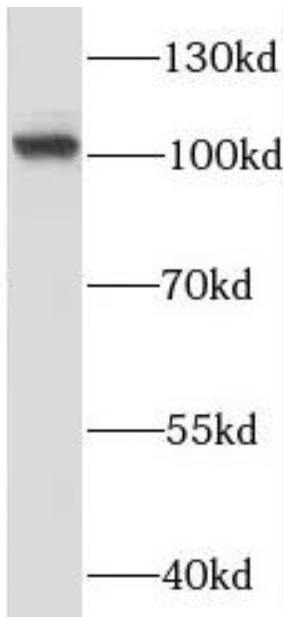
B9 Bld, High-Tech Medical Devices Park, No. 818 Gaoxin Ave. East Lake High-Tech Development Zone. Wuhan, Hubei, China(430206)

Recommended dilution: WB: 1:500-1:5000; IHC: 1:20-1:200; IF: 1:50-1:500

Image:



Immunohistochemistry of paraffin-embedded human breast cancer using FNab07162(RBM15 antibody) at dilution of 1:100



HEK-293 cells were subjected to SDS PAGE followed by western blot with FNab07162(RBM15 antibody) at dilution of 1:1000

Wuhan Fine Biotech Co., Ltd.

B9 Bld, High-Tech Medical Devices Park, No. 818 Gaoxin Ave. East Lake High-Tech Development Zone. Wuhan, Hubei, China(430206)

Tel : (0086)027-87384275

Fax: (0086)027-87800889

www.fn-test.com