

anti- RB1CC1 antibody

Product Information

Catalog No.:	FNab07143
Size:	100µg
Form:	liquid
Purification:	Immunogen affinity purified
Purity:	≥95% as determined by SDS-PAGE
Host:	Rabbit
Clonality:	polyclonal
Clone ID:	None
IsoType:	IgG
Storage:	PBS with 0.02% sodium azide and 50% glycerol pH 7.3, -20°C for 12 months (Avoid repeated freeze / thaw cycles.)

Background

Plays a role as a modulator of TGF-beta-signaling by restricting substrate specificity of RNF111. Involved in autophagy. Regulates early events but also late events of autophagosome formation through direct interaction with Atg16L1. Required for the formation of the autophagosome-like double-membrane structure that surrounds the Salmonella-containing vacuole (SCV) during *S. typhimurium* infection and subsequent xenophagy. Autophagy positively regulates repair of DNA damage induced by ionizing radiation and negatively regulates apoptosis. Plays an indispensable role in fetal hematopoiesis and in the regulation of neuronal homeostasis (By similarity). Implicated in the regulation of RB1 expression. Functions as a DNA-binding transcription factor. Is a potent regulator of the RB1 pathway and a mediator that plays a crucial role in muscular differentiation. Expression is, thus, a prerequisite for myogenic differentiation. Inhibits PTK2/FAK1 and PTK2B/PYK2 activity and activation of downstream signaling pathways.

Immunogen information

Immunogen:	RB1-inducible coiled-coil 1
Synonyms:	CC1, DRAGOU14, FIP200, KIAA0203, RB1 inducible coiled coil 1, RB1CC1, RBICC
Observed MW:	200 kDa

Wuhan Fine Biotech Co., Ltd.

B9 Bld, High-Tech Medical Devices Park, No. 818 Gaoxin Ave. East Lake High-Tech Development Zone, Wuhan, Hubei, China (430206)

Tel : (0086)027-87384275

Fax: (0086)027-87800889 www.fn-test.com

UniprotID : Q8TDY2

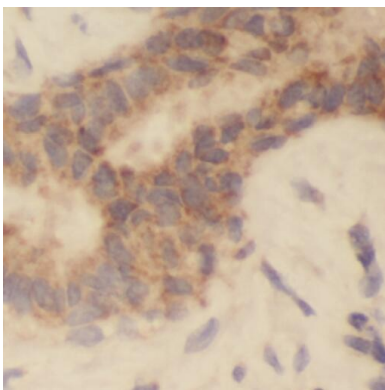
Application

Reactivity: Human, Mouse, Rat

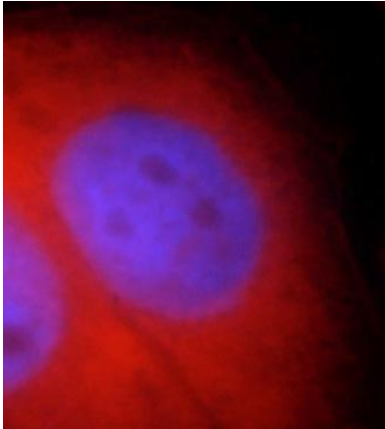
Tested Application: ELISA, WB, IHC, IF, IP

Recommended dilution: WB: 1:1000-1:6000; IP:1:500-1:1000; IHC: 1:20-1:200; IF: 1:10-1:100

Image:



Immunohistochemistry of paraffin-embedded human breast cancer using FNab07143(RB1CC1 antibody) at dilution of 1:200



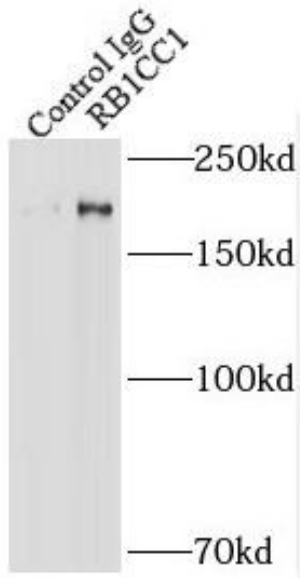
Immunofluorescent analysis of HepG2 cells, using FNab07143 (RB1CC1 antibody) at 1:25 dilution and Rhodamine-labeled goat anti-rabbit IgG (red).

Wuhan Fine Biotech Co., Ltd.

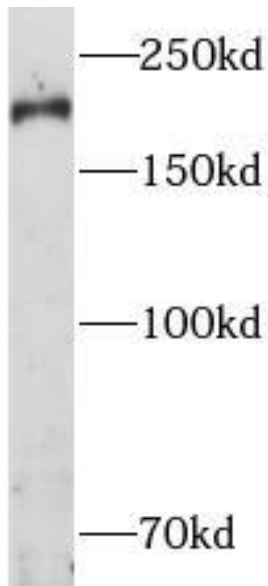
B9 Bld, High-Tech Medical Devices Park, No. 818 GaoxinAve. East Lake High-Tech Development Zone. Wuhan, Hubei, China(430206)

Tel : (0086)027-87384275

Fax: (0086)027-87800889 www.fn-test.com



IP Result of anti-RB1CC1 (IP:FNab07143, 5ug;
Detection:FNab07143 1:500) with HEK-293 cells
lysate 2500ug.



HeLa cells were subjected to SDS PAGE followed
by western blot with FNab07143(RB1CC1
antibody) at dilution of 1:1000