

## anti- RB1 antibody

### Product Information

Catalog No.:	FNab07141
Size:	100µg
Form:	liquid
Purification:	Immunogen affinity purified
Purity:	≥95% as determined by SDS-PAGE
Host:	Rabbit
Clonality:	polyclonal
Clone ID:	None
IsoType:	IgG
Storage:	PBS with 0.02% sodium azide and 50% glycerol pH 7.3, -20°C for 12 months (Avoid repeated freeze / thaw cycles.)

### Background

Key regulator of entry into cell division that acts as a tumor suppressor. Promotes G0-G1 transition when phosphorylated by CDK3/cyclin-C. Acts as a transcription repressor of E2F1 target genes. The underphosphorylated, active form of RB1 interacts with E2F1 and represses its transcription activity, leading to cell cycle arrest. Directly involved in heterochromatin formation by maintaining overall chromatin structure and, in particular, that of constitutive heterochromatin by stabilizing histone methylation. Recruits and targets histone methyltransferases SUV39H1, KMT5B and KMT5C, leading to epigenetic transcriptional repression. Controls histone H4 'Lys-20' trimethylation. Inhibits the intrinsic kinase activity of TAF1. Mediates transcriptional repression by SMARCA4/BRG1 by recruiting a histone deacetylase (HDAC) complex to the c-FOS promoter. In resting neurons, transcription of the c-FOS promoter is inhibited by BRG1-dependent recruitment of a phospho-RB1-HDAC1 repressor complex. Upon calcium influx, RB1 is dephosphorylated by calcineurin, which leads to release of the repressor complex (By similarity). In case of viral infections, interactions with SV40 large T antigen, HPV E7 protein or adenovirus E1A protein induce the disassembly of RB1-E2F1 complex thereby disrupting RB1's activity.

### Immunogen information

Immunogen: retinoblastoma 1

### Wuhan Fine Biotech Co., Ltd.

B9 Bld, High-Tech Medical Devices Park, No. 818 Gaoxin Ave. East Lake High-Tech Development Zone. Wuhan, Hubei, China (430206)

Tel : (0086)027-87384275

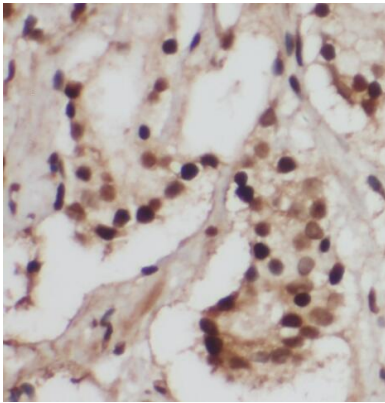
Fax: (0086)027-87800889 [www.fn-test.com](http://www.fn-test.com)

---

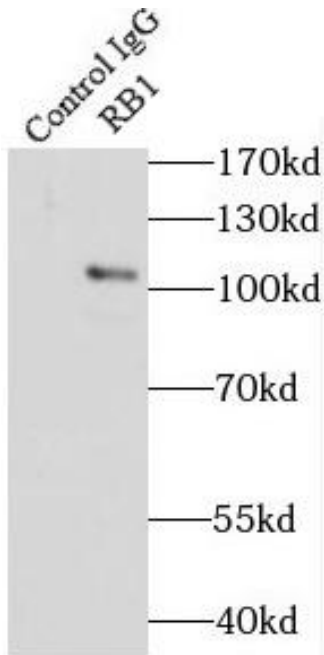
Synonyms: OSRC, p105 Rb, pp110, pRb, RB, RB1, retinoblastoma 1  
Observed MW: 110 kDa  
UniprotID : P06400

### Application

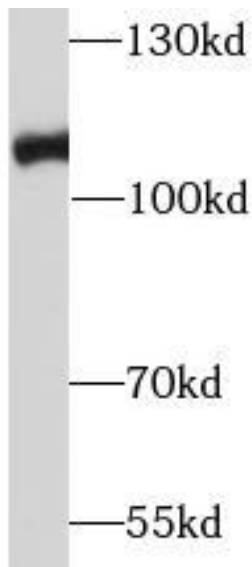
Reactivity: Human, Mouse  
Tested Application: ELISA, WB, IHC, IP  
Recommended dilution: WB: 1:1000-1:3000; IP:1:200-1:1000; IHC: 1:50-1:200  
Image:



Immunohistochemistry of paraffin-embedded human prostate cancer using FNab07141(RB1 antibody) at dilution of 1:200



IP result of anti-RB1(IP:FNab07141, 3ug;  
Detection:FNab07141 1:500) with A431 cells  
lysate 3000 ug



Jurkat cells were subjected to SDS PAGE followed  
by western blot with FNab07141(RB1 antibody) at  
dilution of 1:3000