

## anti- RAB6A antibody

### Product Information

Catalog No.:	FNab07041
Size:	100µg
Form:	liquid
Purification:	Immunogen affinity purified
Purity:	≥95% as determined by SDS-PAGE
Host:	Rabbit
Clonality:	polyclonal
Clone ID:	None
IsoType:	IgG
Storage:	PBS with 0.02% sodium azide and 50% glycerol pH 7.3, -20°C for 12 months (Avoid repeated freeze / thaw cycles.)

### Background

Protein transport.Regulator of membrane traffic from the Golgi apparatus towards the endoplasmic reticulum(ER). Has a low GTPase activity.

### Immunogen information

Immunogen:	RAB6A, member RAS oncogene family
Synonyms:	RAB6
Observed MW:	24 kDa
UniprotID :	P20340

### Application

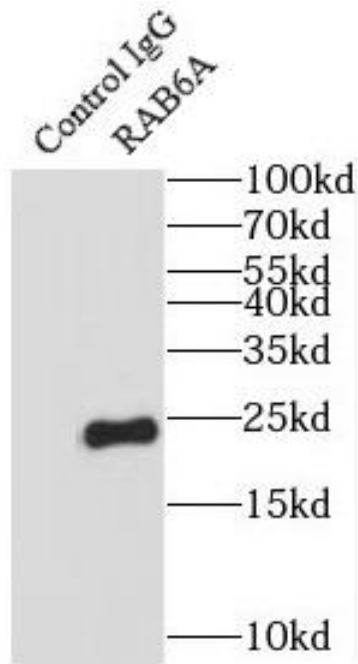
Reactivity:	Human, Mouse
Tested Application:	ELISA, WB, IP
Recommended dilution:	WB: 1:500-1:2000; IP: 1:200-1:2000
Image:	

### Wuhan Fine Biotech Co., Ltd.

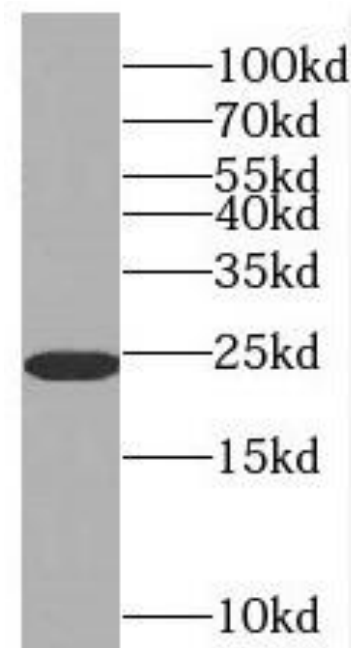
B9 Bld, High-Tech Medical Devices Park, No. 818 GaoxinAve.East Lake High-Tech Development Zone.Wuhan, Hubei, China(430206)

Tel :( 0086)027-87384275

Fax: (0086)027-87800889 [www.fn-test.com](http://www.fn-test.com)



IP Result of anti-RAB6A (IP:FNab07041, 4ug;  
Detection:FNab07041 1:500) with mouse brain  
tissue lysate 2640ug.



mouse brain tissue were subjected to SDS PAGE  
followed by western blot with FNab07041(RAB6A  
antibody) at dilution of 1:1500