

## anti- RAB31-specific antibody

### Product Information

Catalog No.:	FNab07015
Size:	100µg
Form:	liquid
Purification:	Immunogen affinity purified
Purity:	≥95% as determined by SDS-PAGE
Host:	Rabbit
Clonality:	polyclonal
Clone ID:	None
IsoType:	IgG
Storage:	PBS with 0.02% sodium azide and 50% glycerol pH 7.3, -20°C for 12 months (Avoid repeated freeze / thaw cycles.)

### Background

RAB 31, also named as RAB22b, belongs to small GTP-binding proteins of the RAB family. Rab31 localizes in the trans-Golgi network (TGN) and endosomes. It is required for transport of mannose 6-phosphate receptors (MPRs) from the trans-Golgi network (TGN) to endosomes. This antibody can bind RAB31 specifically, and not react RAB22a.

### Immunogen information

Immunogen:	RAB31, member RAS oncogene family
Synonyms:	Rab22B, RAB31, Ras related protein Rab 22B, Ras related protein Rab 31
Observed MW:	22 kDa
Uniprot ID :	Q13636

### Application

Reactivity:	Human, Mouse, Rat
Tested Application:	ELISA, WB, IHC
Recommended dilution:	WB: 1:500-1:1000; IHC: 1:50-1:200

1

### Wuhan Fine Biotech Co., Ltd.

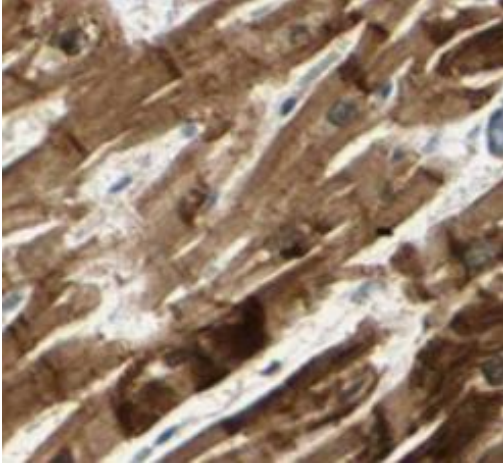
B9 Bld, High-Tech Medical Devices Park, No. 818 Gaoxin Ave. East Lake High-Tech Development Zone. Wuhan, Hubei, China(430206)

Tel : (0086)027-87384275

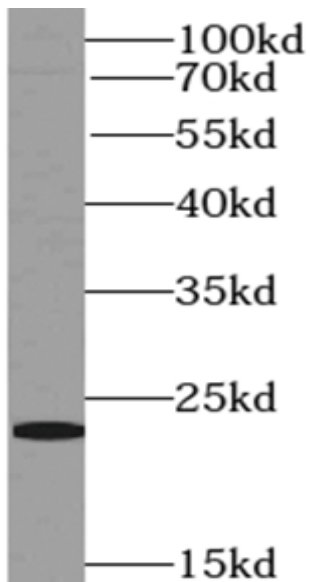
Fax: (0086)027-87800889

[www.fn-test.com](http://www.fn-test.com)

Image:



Immunohistochemistry of paraffin-embedded human heart tissue slide using FNab07015(RAB31-specific Antibody) at dilution of 1:50



human brain tissue were subjected to SDS PAGE followed by western blot with FNab07015(RAB31-specific antibody) at dilution of 1:500