

anti- PTRF antibody

Product Information

| | |
|---------------|---|
| Catalog No.: | FNab06950 |
| Size: | 100µg |
| Form: | liquid |
| Purification: | Immunogen affinity purified |
| Purity: | ≥95% as determined by SDS-PAGE |
| Host: | Rabbit |
| Clonality: | polyclonal |
| Clone ID: | None |
| IsoType: | IgG |
| Storage: | PBS with 0.02% sodium azide and 50% glycerol pH 7.3, -20°C for 12 months (Avoid repeated freeze / thaw cycles.) |

Background

Plays an important role in caveolae formation and organization. Required for the sequestration of mobile caveolin into immobile caveolae. Termination of transcription by RNA polymerase I involves pausing of transcription by TTF1, and the dissociation of the transcription complex, releasing pre-rRNA and RNA polymerase I from the template. PTRF is required for dissociation of the ternary transcription complex.

Immunogen information

| | |
|--------------|--|
| Immunogen: | polymerase I and transcript release factor |
| Synonyms: | None |
| Observed MW: | 50-55 kDa |
| UniprotID : | Q6NZI2 |

Application

| | |
|-----------------------|---|
| Reactivity: | Human, Mouse, Rat |
| Tested Application: | ELISA, WB, IHC, IF, IP |
| Recommended dilution: | WB: 1:1000-1:10000; IP: 1:200-1:2000; IHC: 1:20-1:200; IF: 1:10-1:100 |

1

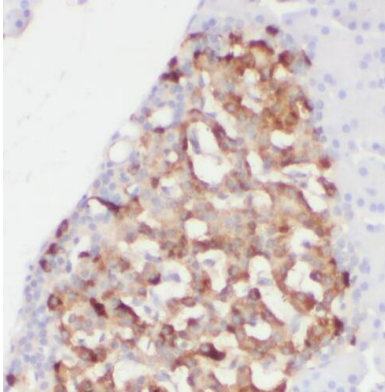
Wuhan Fine Biotech Co., Ltd.

B9 Bld, High-Tech Medical Devices Park, No. 818 Gaoxin Ave. East Lake High-Tech Development Zone. Wuhan, Hubei, China (430206)

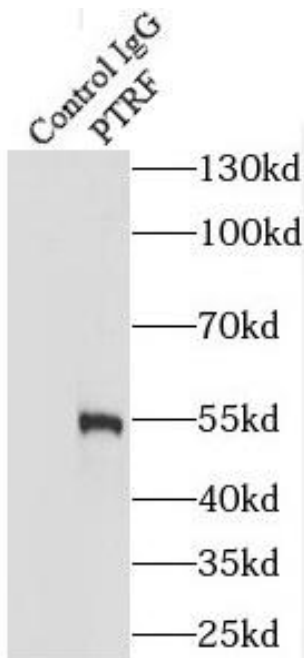
Tel : (0086)027-87384275

Fax: (0086)027-87800889 www.fn-test.com

Image:



Immunohistochemistry of paraffin-embedded human pancreas using FNab06950(PTRF antibody) at dilution of 1:100



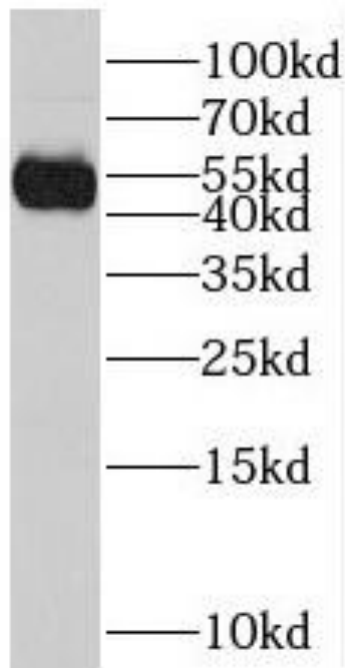
IP Result of anti-PTRF (IP:FNab06950, 3ug; Detection:FNab06950 1:800) with mouse lung tissue lysate 5160ug.

Wuhan Fine Biotech Co., Ltd.

B9 Bld, High-Tech Medical Devices Park, No. 818 GaoxinAve.East Lake High-Tech Development Zone.Wuhan, Hubei, China(430206)

Tel : (0086)027-87384275

Fax: (0086)027-87800889 www.fn-test.com



A549 cells were subjected to SDS PAGE followed by western blot with FNab06950(PTRF antibody) at dilution of 1:1000