

anti- PSMC1 antibody

Product Information

Catalog No.:	FNab06877
Size:	100µg
Form:	liquid
Purification:	Immunogen affinity purified
Purity:	≥95% as determined by SDS-PAGE
Host:	Rabbit
Clonality:	polyclonal
Clone ID:	None
IsoType:	IgG
Storage:	PBS with 0.02% sodium azide and 50% glycerol pH 7.3, -20°C for 12 months (Avoid repeated freeze / thaw cycles.)

Background

The 26S protease is involved in the ATP-dependent degradation of ubiquitinated proteins. The regulatory(or ATPase) complex confers ATP dependency and substrate specificity to the 26S complex.

Immunogen information

Immunogen:	proteasome(prosome, macropain) 26S subunit, ATPase, 1
Synonyms:	P26S4, p56, PSMC1, S4
Observed MW:	55kd
Uniprot ID :	P62191

Application

Reactivity:	Human, Mouse, Rat
Tested Application:	ELISA, WB
Recommended dilution:WB:	1:500-1:5000
Image:	

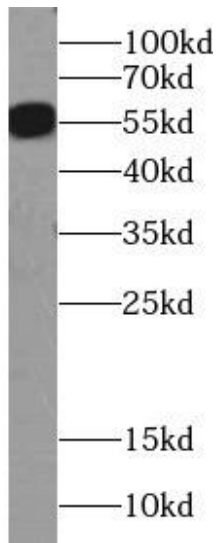
Wuhan Fine Biotech Co., Ltd.

B9 Bld, High-Tech Medical Devices Park, No. 818 Gaoxin Ave. East Lake High-Tech Development Zone. Wuhan, Hubei, China(430206)

Tel : (0086)027-87384275

Fax: (0086)027-87800889

www.fn-test.com



A549 cells were subjected to SDS PAGE followed by western blot with FNab06877(PSMC1 Antibody) at dilution of 1:1000

Wuhan Fine Biotech Co., Ltd.

B9 Bld, High-Tech Medical Devices Park, No. 818 Gaoxin Ave. East Lake High-Tech Development Zone. Wuhan, Hubei, China(430206)

Tel : (0086)027-87384275

Fax: (0086)027-87800889

www.fn-test.com