

anti- PRICKLE1 antibody

Product Information

Catalog No.:	FNab06774
Size:	100µg
Form:	liquid
Purification:	Immunogen affinity purified
Purity:	≥95% as determined by SDS-PAGE
Host:	Rabbit
Clonality:	polyclonal
Clone ID:	None
IsoType:	IgG
Storage:	PBS with 0.02% sodium azide and 50% glycerol pH 7.3, -20°C for 12 months (Avoid repeated freeze / thaw cycles.)

Background

Involved in the planar cell polarity pathway that controls convergent extension during gastrulation and neural tube closure. Convergent extension is a complex morphogenetic process during which cells elongate, move mediolaterally, and intercalate between neighboring cells, leading to convergence toward the mediolateral axis and extension along the anteroposterior axis. Necessary for nuclear localization of REST. May serve as nuclear receptor.

Immunogen information

Immunogen:	prickle homolog 1(Drosophila)
Synonyms:	RILP
Observed MW:	94 kDa, 55-60 kDa
UniprotID :	Q96MT3

Application

Reactivity:	Human, Mouse
Tested Application:	ELISA, WB, IP
Recommended dilution:	WB: 1:500-1:2000; IP: 1:200-1:2000

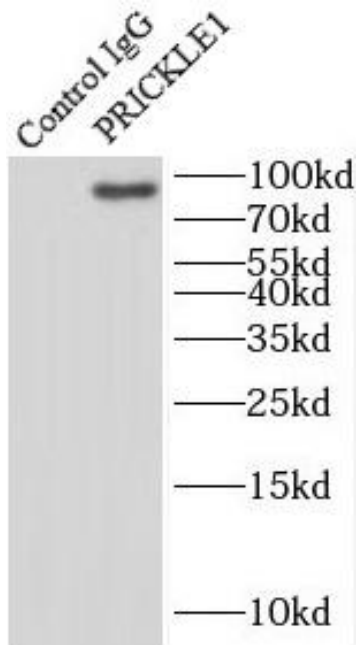
Wuhan Fine Biotech Co., Ltd.

B9 Bld, High-Tech Medical Devices Park, No. 818 GaoxinAve. East Lake High-Tech Development Zone. Wuhan, Hubei, China(430206)

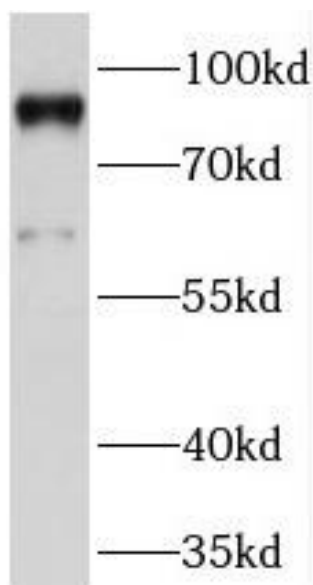
Tel : (0086)027-87384275

Fax: (0086)027-87800889 www.fn-test.com

Image:



IP Result of anti-PRICKLE1 (IP:FNab06774, 3ug;
Detection:FNab06774 1:1000) with mouse brain
tissue lysate 7000ug.



mouse brain tissue were subjected to SDS PAGE
followed by western blot with
FNab06774(PRICKLE1 antibody) at dilution of
1:1000

Wuhan Fine Biotech Co., Ltd.

B9 Bld, High-Tech Medical Devices Park, No. 818 GaoxinAve. East Lake High-Tech Development Zone. Wuhan, Hubei, China(430206)

Tel : (0086)027-87384275

Fax: (0086)027-87800889 www.fn-test.com