

anti- POTED-Specific antibody

Product Information

| | |
|---------------|---|
| Catalog No.: | FNab06648 |
| Size: | 100µg |
| Form: | liquid |
| Purification: | Immunogen affinity purified |
| Purity: | ≥95% as determined by SDS-PAGE |
| Host: | Rabbit |
| Clonality: | polyclonal |
| Clone ID: | None |
| IsoType: | IgG |
| Storage: | PBS with 0.02% sodium azide and 50% glycerol pH 7.3, -20°C for 12 months (Avoid repeated freeze / thaw cycles.) |

Background

POTED, also named as A26B3, ANKRD21 and POTE, belongs to the POTE family. POTE has an important signaling function in the reproductive system. The antibody is specific to POTED.

Immunogen information

| | |
|--------------|--|
| Immunogen: | POTE ankyrin domain family, member D |
| Synonyms: | A26B3, ANKRD21, ANKRD26 like family B member 3, POTE, POTE 21, POTE21, POTED, Protein POTE |
| Observed MW: | 66kd |
| Uniprot ID : | Q86YR6 |

Application

| | |
|-----------------------|----------------------------------|
| Reactivity: | Human |
| Tested Application: | ELISA, WB, IHC |
| Recommended dilution: | WB 1:500-1:1000 ; IHC 1:50-1:100 |
| Image: | |

1

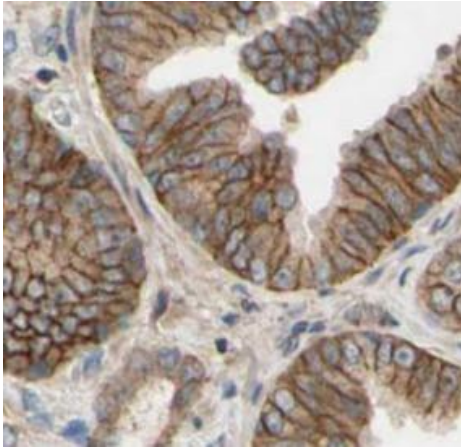
Wuhan Fine Biotech Co., Ltd.

B9 Bld, High-Tech Medical Devices Park, No. 818 Gaoxin Ave. East Lake High-Tech Development Zone. Wuhan, Hubei, China(430206)

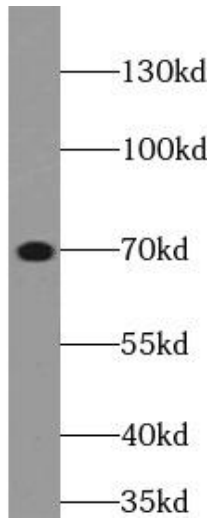
Tel : (0086)027-87384275

Fax: (0086)027-87800889

www.fn-test.com



Immunohistochemistry of paraffin-embedded human prostate cancer using FNab06648(POTED-Specific antibody) at dilution of 1:100



Ramos cells were subjected to SDS PAGE followed by western blot with FNab06648(POTED-Specific antibody) at dilution of 1:1000