

anti- POLR2C antibody

Product Information

Catalog No.:	FNab06621
Size:	100µg
Form:	liquid
Purification:	Immunogen affinity purified
Purity:	≥95% as determined by SDS-PAGE
Host:	Rabbit
Clonality:	polyclonal
Clone ID:	None
IsoType:	IgG
Storage:	PBS with 0.02% sodium azide and 50% glycerol pH 7.3, -20°C for 12 months (Avoid repeated freeze / thaw cycles.)

Background

DNA-dependent RNA polymerase catalyzes the transcription of DNA into RNA using the four ribonucleoside triphosphates as substrates. Component of RNA polymerase II which synthesizes mRNA precursors and many functional non-coding RNAs. Pol II is the central component of the basal RNA polymerase II transcription machinery. It is composed of mobile elements that move relative to each other. RPB3 is part of the core element with the central large cleft and the clamp element that moves to open and close the cleft(By similarity).

Immunogen information

Immunogen:	polymerase(RNA) II(DNA directed) polypeptide C, 33kDa
Synonyms:	None
Observed MW:	33 kDa
UniprotID :	P19387

Application

Reactivity:	Human, Mouse, Rat
Tested Application:	ELISA, WB, IHC, IP

Wuhan Fine Biotech Co., Ltd.

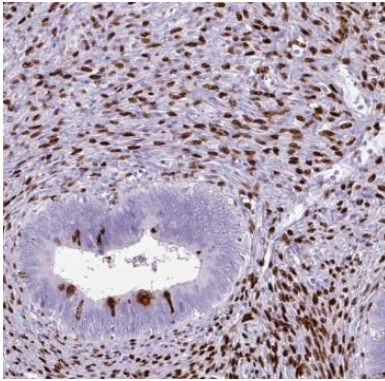
B9 Bld, High-Tech Medical Devices Park, No. 818 GaoxinAve.East Lake High-Tech Development Zone.Wuhan, Hubei, China(430206)

Tel :(0086)027-87384275

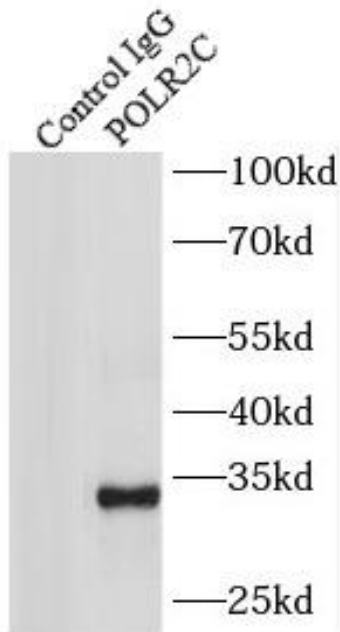
Fax: (0086)027-87800889 www.fn-test.com

Recommended dilution: WB: 1:500-1:2000; IP: 1:200-1:1000; IHC: 1:20-1:200

Image:



Immunohistochemistry of paraffin-embedded human cervical cancer using FNab06621(POLR2C antibody) at dilution of 1:100



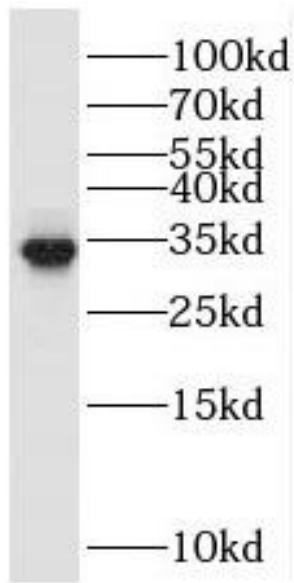
IP Result of anti-POLR2C (IP:FNab06621, 4ug; Detection:FNab06621 1:500) with HeLa cells lysate 2000ug.

Wuhan Fine Biotech Co., Ltd.

B9 Bld, High-Tech Medical Devices Park, No. 818 GaoxinAve. East Lake High-Tech Development Zone. Wuhan, Hubei, China(430206)

Tel : (0086)027-87384275

Fax: (0086)027-87800889 www.fn-test.com



human kidney tissue were subjected to SDS PAGE followed by western blot with FNab06621(POLR2C antibody) at dilution of 1:500